

WT1 Polyclonal antibody

Catalog Number: 23235-1-AP

Basic Information

Catalog Number: 23235-1-AP	GenBank Accession Number: BC032861	Purification Method: Antigen affinity purification
Size: 150ul	GeneID (NCBI): 7490	Recommended Dilutions: WB 1:200-1:1000
Source: Rabbit	Full Name: Wilms tumor 1	
Isotype: IgG	Calculated MW: 449 aa, 49 kDa, 57 kDa	
Immunogen Catalog Number: AG19541		

Applications

Tested Applications: WB, ELISA	Positive Controls: WB : mouse kidney tissue,
Species Specificity: human	

Background Information

The WT1 gene encodes a zinc finger DNA-binding protein that acts as a transcriptional activator or repressor depending on the cellular or chromosomal context, and it is required for normal formation of the genitourinary system and mesothelial tissues. WT1 inhibits apoptosis through p53 and Bcl-2 and also inhibits the differentiation of leukemic cells. Function of WT1 may be isoform-specific: isoforms lacking the KTS motif may act as transcription factors. Isoforms containing the KTS motif may bind mRNA and play a role in mRNA metabolism or splicing. Isoform 1 has lower affinity for DNA, and can bind RNA.

Storage

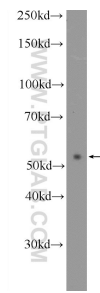
Storage:
Store at -20°C. Stable for one year after shipment.
Storage Buffer:
PBS with 0.02% sodium azide and 50% glycerol pH 7.3.
Aliquoting is unnecessary for -20°C storage

*** 20ul sizes contain 0.1% BSA

For technical support and original validation data for this product please contact:
T: 1 (888) 4PTGLAB (1-888-478-4522) (toll free in USA), or 1(312) 455-8498 (outside USA)
E: proteintech@ptglab.com
W: ptglab.com

This product is exclusively available under Proteintech Group brand and is not available to purchase from any other manufacturer.

Selected Validation Data



mouse kidney tissue were subjected to SDS PAGE followed by western blot with 23235-1-AP (WT1 Antibody) at dilution of 1:300 incubated at room temperature for 1.5 hours.