

# MEPE Polyclonal antibody

Catalog Number: 23256-1-AP

## Basic Information

### Catalog Number:

23256-1-AP

### Size:

150ul, Concentration: 1000 µg/ml by Nanodrop and 540 µg/ml by Bradford method using BSA as the standard;

### Source:

Rabbit

### Isotype:

IgG

### Immunogen Catalog Number:

AG19758

### GenBank Accession Number:

BC128158

### GeneID (NCBI):

56955

### UNIPROT ID:

Q9NQ76

### Full Name:

matrix extracellular phosphoglycoprotein

### Calculated MW:

525 aa, 58 kDa

### Observed MW:

98 kDa

### Purification Method:

Antigen affinity purification

### Recommended Dilutions:

WB 1:500-1:2000

IP 0.5-4.0 µg for 1.0-3.0 mg of total protein lysate

IHC 1:20-1:200

IF/ICC 1:20-1:200

## Applications

### Tested Applications:

WB, IP, IF, IHC, ELISA

### Species Specificity:

human

**Note-IHC: suggested antigen retrieval with TE buffer pH 9.0; (\*) Alternatively, antigen retrieval may be performed with citrate buffer pH 6.0**

### Positive Controls:

WB : HeLa cells, MCF-7 cells

IP : HeLa cells,

IHC : human lung tissue,

IF/ICC : HepG2 cells,

## Background Information

Matrix extracellular phosphoglycoprotein (MEPE), also known as osteoblast/osteocyte factor 45 (OF45), is a member of the small integrin-binding ligand N-linked glycoprotein (SIBLING) family (PMID: 12952171). MEPE promotes renal phosphate excretion and modulates mineralization (PMID: 22582013). It can be phosphorylated by secreted protein kinases. (PMID: 14962809). MEPE is expressed in osteoblasts, osteocytes and odontoblasts, and the expression has also been reported in numerous human tumor cell lines (PMID: 14962809; 20145617). It is a 525-amino acid protein with a calculated molecular weight of 58 kDa. This antibody raised against a full-length human MEPE protein detects a major band of 98 kDa.

## Storage

### Storage:

Store at -20°C. Stable for one year after shipment.

### Storage Buffer:

PBS with 0.02% sodium azide and 50% glycerol pH 7.3.

Aliquoting is unnecessary for -20°C storage

\*\*\* 20ul sizes contain 0.1% BSA

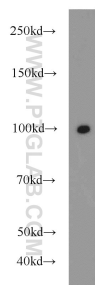
For technical support and original validation data for this product please contact:

T: 1 (888) 4PTGLAB (1-888-478-4522) (toll free in USA), or 1(312) 455-8498 (outside USA)

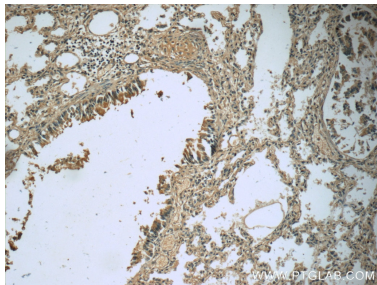
E: [proteintech@ptglab.com](mailto:proteintech@ptglab.com)  
W: [ptglab.com](http://ptglab.com)

This product is exclusively available under Proteintech Group brand and is not available to purchase from any other manufacturer.

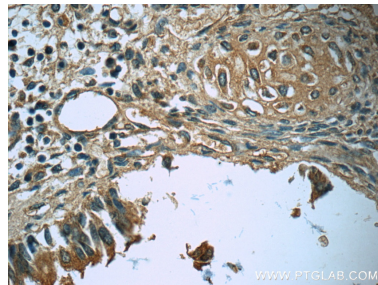
Selected Validation Data



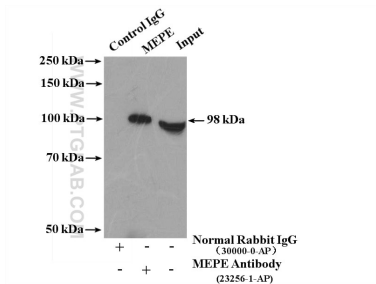
HeLa cells were subjected to SDS PAGE followed by western blot with 23256-1-AP (MEPE antibody) at dilution of 1:1500 incubated at room temperature for 1.5 hours.



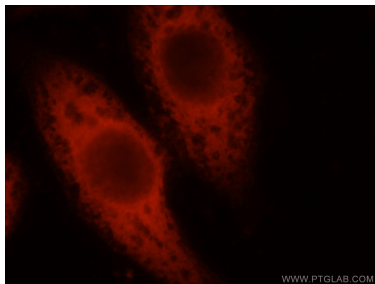
Immunohistochemical analysis of paraffin-embedded human lung slide using 23256-1-AP (MEPE Antibody) at dilution of 1:50 (under 10x lens).



Immunohistochemical analysis of paraffin-embedded human lung slide using 23256-1-AP (MEPE Antibody) at dilution of 1:50 (under 40x lens).



IP result of anti-MEPE (IP:23256-1-AP, 4ug; Detection:23256-1-AP 1:1000) with HeLa cells lysate 4000ug.



Immunofluorescent analysis of HepG2 cells, using MEPE antibody 23256-1-AP at 1:50 dilution and Rhodamine-labeled goat anti-rabbit IgG (red).