

For Research Use Only

A2LD1 Polyclonal antibody

Catalog Number: 23280-1-AP

1 Publications



Basic Information

Catalog Number: 23280-1-AP	GenBank Accession Number: BC001077	Purification Method: Antigen affinity purification
Size: 150ul , Concentration: 600 µg/ml by Nanodrop and 387 µg/ml by Bradford method using BSA as the standard;	GeneID (NCBI): 87769	Recommended Dilutions: WB 1:500-1:1000
Source: Rabbit	Full Name: AIG2-like domain 1	
Isotype: IgG	Calculated MW: 153 aa, 17 kDa	
Immunogen Catalog Number: AG18549	Observed MW: 17 kDa	

Applications

Tested Applications: WB, ELISA	Positive Controls: WB : mouse lung tissue, mouse bladder tissue, mouse brain tissue
Cited Applications: WB	
Species Specificity: human, mouse, rat	
Cited Species: mouse	

Background Information

Notable Publications

Author	Pubmed ID	Journal	Application
Qing Dai	36302989	Nat Biotechnol	WB

Storage

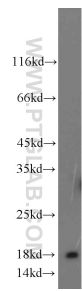
Storage:
Store at -20°C. Stable for one year after shipment.
Storage Buffer:
PBS with 0.02% sodium azide and 50% glycerol pH 7.3.
Aliquoting is unnecessary for -20°C storage

*** 20ul sizes contain 0.1% BSA

For technical support and original validation data for this product please contact:
T: 1 (888) 4PTGLAB (1-888-478-4522) (toll free in USA), or 1(312) 455-8498 (outside USA)
E: proteintech@ptglab.com
W: ptglab.com

This product is exclusively available under Proteintech Group brand and is not available to purchase from any other manufacturer.

Selected Validation Data



mouse lung tissue were subjected to SDS PAGE followed by western blot with 23280-1-AP (A2LD1 antibody) at dilution of 1:500 incubated at room temperature for 1.5 hours.