

For Research Use Only

# MTERFD1 Polyclonal antibody

Catalog Number: 23296-1-AP

1 Publications



## Basic Information

Catalog Number:

23296-1-AP

Size:

150ul, Concentration: 550 ug/ml by Nanodrop and 333 ug/ml by Bradford method using BSA as the standard;

Source:

Rabbit

Isotype:

IgG

Immunogen Catalog Number:

AG19847

GenBank Accession Number:

BC012995

GeneID (NCBI):

51001

UNIPROT ID:

Q96E29

Full Name:

MTERF domain containing 1

Calculated MW:

417 aa, 48 kDa

Observed MW:

48 kDa

Purification Method:

Antigen affinity purification

Recommended Dilutions:

WB 1:500-1:2000

## Applications

Tested Applications:

WB, ELISA

Cited Applications:

WB, IF

Species Specificity:

human, mouse

Cited Species:

mouse, canine

Positive Controls:

WB : mouse liver tissue, HeLa cells

## Notable Publications

Author	Pubmed ID	Journal	Application
Wanyue Sang	37346800	J Inflamm Res	IF, WB

## Storage

Storage:

Store at -20°C. Stable for one year after shipment.

Storage Buffer:

PBS with 0.02% sodium azide and 50% glycerol pH 7.3.

Aliquoting is unnecessary for -20°C storage

\*\*\* 20ul sizes contain 0.1% BSA

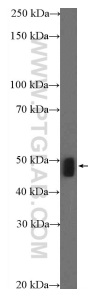
For technical support and original validation data for this product please contact:

T: 1 (888) 4PTGLAB (1-888-478-4522) (toll free in USA), or 1(312) 455-8498 (outside USA)

E: [proteintech@ptglab.com](mailto:proteintech@ptglab.com)  
W: [ptglab.com](http://ptglab.com)

This product is exclusively available under Proteintech Group brand and is not available to purchase from any other manufacturer.

## Selected Validation Data



mouse liver tissue were subjected to SDS PAGE followed by western blot with 23296-1-AP (MTERFD1 Antibody) at dilution of 1:1000 incubated at room temperature for 1.5 hours.