

For Research Use Only

WWTR1 Polyclonal antibody

Catalog Number: 23306-1-AP

Featured Product

46 Publications



Basic Information

Catalog Number:

23306-1-AP

Size:

150ul, Concentration: 460 µg/ml by Nanodrop;

Source:

Rabbit

Isotype:

IgG

Immunogen Catalog Number:

AG19659

GenBank Accession Number:

BC014052

GeneID (NCBI):

25937

UNIPROT ID:

Q9GZV5

Full Name:

WW domain containing transcription regulator 1

Calculated MW:

44 kDa

Observed MW:

50 kDa

Purification Method:

Antigen affinity purification

Recommended Dilutions:

WB 1:1000-1:8000

IP 0.5-4.0 ug for 1.0-3.0 mg of total protein lysate

IF 1:50-1:500

Applications

Tested Applications:

IF, IP, WB, ELISA

Cited Applications:

WB, IP, IHC, IF, CoIP, ChIP

Species Specificity:

human, rat

Cited Species:

human, rat, mouse

Positive Controls:

WB : HeLa cells, LN229 cells, MDA-MB-453s cells

IP : MDA-MB-453s cells,

IF : rat kidney tissue,

Background Information

TAZ, also referred as WWTR1, is a transcriptional co-activator with a PDZ-binding motif that is regulated by its interaction with 14-3-3 protein. TAZ is expressed in many primary tumors, such as breast cancer, thyroid carcinoma, colorectal cancer, and glioma. TAZ has been reported to be one of the nuclear effectors of Hippo-related pathways that regulate organ size control, cancer stem cell (CSC) properties, and epithelial-mesenchymal transition (EMT). TAZ has been defined for its role in the nucleus, where it functions directly as a transcriptional regulator by interacting with several nuclear factors as Runx2/Cbfa1, NHERF-2, TEF-1, TBX5, PAX3, PAX8 and TTF-1.

Notable Publications

Author	Pubmed ID	Journal	Application
Bang-Yi Lin	32969138	J Cell Mol Med	WB
Chunxu Luo	32914480	Phyther Res	WB
Wen Zhao	34490599	Histol Histopathol	WB, IHC

Storage

Storage:

Store at -20°C. Stable for one year after shipment.

Storage Buffer:

PBS with 0.02% sodium azide and 50% glycerol pH 7.3.

Aliquoting is unnecessary for -20°C storage

*** 20ul sizes contain 0.1% BSA

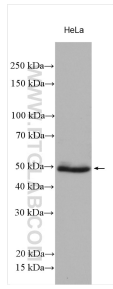
For technical support and original validation data for this product please contact:

T: 1 (888) 4PTGLAB (1-888-478-4522) (toll free in USA), or 1(312) 455-8498 (outside USA)

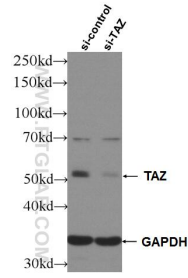
E: proteintech@ptglab.com
W: ptglab.com

This product is exclusively available under Proteintech Group brand and is not available to purchase from any other manufacturer.

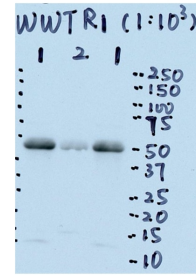
Selected Validation Data



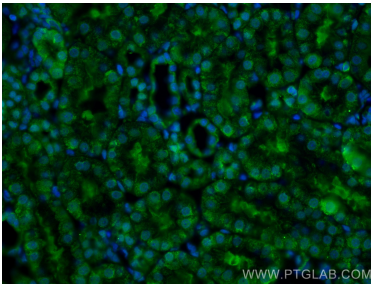
HeLa cells were subjected to SDS PAGE followed by western blot with 23306-1-AP (TAZ antibody) at dilution of 1:4000 incubated at room temperature for 1.5 hours.



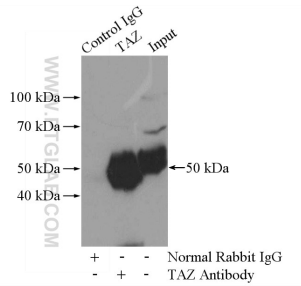
WB result of TAZ antibody (23306-1-AP; 1:8000; incubated at room temperature for 1.5 hours) with sh-Control and sh-TAZ transfected HeLa cells.



WB result of WWTR1 antibody (TAZ antibody, 23306-1-AP, 1:1000) with LN229 cell lysate by Dr. Xiaobing He. (Lane 1, LN229 (GBM cell line) cell lysate. 90 ug; Lane 2, LN229 growth inhibition treatment. 90 ug).



Immunofluorescent analysis of (4% PFA) fixed rat kidney tissue using WWTR1 antibody (23306-1-AP) at dilution of 1:200 and CoraLite®488-Conjugated AffiniPure Goat Anti-Rabbit IgG(H+L).



IP result of anti-WWTR1 (IP:23306-1-AP, 4ug; Detection:23306-1-AP 1:300) with MDA-MB-453s cells lysate 2800ug.