

For Research Use Only

C16orf84 Polyclonal antibody

Catalog Number: 23337-1-AP



Basic Information

Catalog Number:

23337-1-AP

Size:

150ul, Concentration: 900 ug/ml by Nanodrop and 467 ug/ml by Bradford method using BSA as the standard;

Source:

Rabbit

Isotype:

IgG

Immunogen Catalog Number:

AG18428

GenBank Accession Number:

BC125269

GeneID (NCBI):

348180

UNIPROT ID:

Q2VPK5

Full Name:

chromosome 16 open reading frame 84

Calculated MW:

515 aa, 56 kDa

Observed MW:

65-68 kDa

Purification Method:

Antigen affinity purification

Recommended Dilutions:

WB 1:500-1:1000

IP 0.5-4.0 ug for 1.0-3.0 mg of total protein lysate

IHC 1:20-1:200

IF/ICC 1:200-1:800

Applications

Tested Applications:

WB, IHC, IF/ICC, IP, ELISA

Species Specificity:

human, mouse

Note-IHC: suggested antigen retrieval with TE buffer pH 9.0; (*) Alternatively, antigen retrieval may be performed with citrate buffer pH 6.0

Positive Controls:

WB: HepG2 cells, mouse liver tissue, mouse spleen tissue, Raji cells

IP: HepG2 cells,

IHC: human testis tissue, human kidney tissue

IF/ICC: HEK-293 cells,

Background Information

Cytoplasmic tRNA 2-thiolation protein 2 (CUT2), also named as C16orf84 or NCS2, is a 515 amino acid protein, which belongs to the CUT2 family. C16orf84 localizes in the cytoplasm and Plays a central role in 2-thiolation of mcm5S2U at tRNA wobble positions of tRNA(Lys), tRNA(Glu) and tRNA(Gln). C16orf84 may act by forming a heterodimer with CTU1/ATPBD3 that ligates sulfur from thio-carboxylated URM1 onto the uridine of tRNAs at wobble position.

Storage

Storage:

Store at -20°C. Stable for one year after shipment.

Storage Buffer:

PBS with 0.02% sodium azide and 50% glycerol pH 7.3.

Aliquoting is unnecessary for -20°C storage

***** 20ul sizes contain 0.1% BSA**

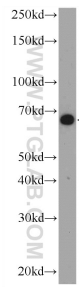
For technical support and original validation data for this product please contact:

T: 1 (888) 4PTGLAB (1-888-478-4522) (toll free in USA), or 1(312) 455-8498 (outside USA)

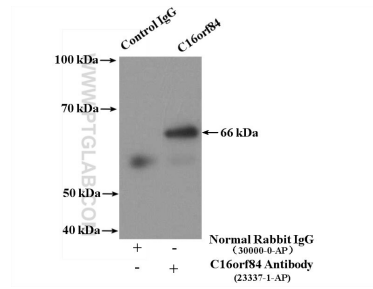
E: proteintech@ptglab.com
W: ptglab.com

This product is exclusively available under Proteintech Group brand and is not available to purchase from any other manufacturer.

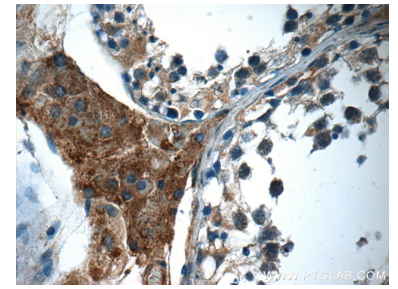
Selected Validation Data



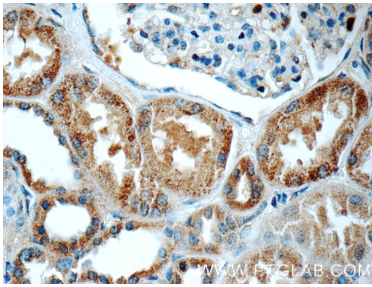
HepG2 cells were subjected to SDS PAGE followed by western blot with 23337-1-AP (C16orf84 Antibody) at dilution of 1:600 incubated at room temperature for 1.5 hours.



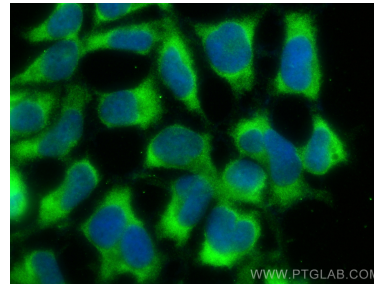
IP result of anti-C16orf84 (IP:23337-1-AP, 4ug; Detection:23337-1-AP 1:500) with HepG2 cells lysate 3600ug.



Immunohistochemical analysis of paraffin-embedded human testis tissue slide using 23337-1-AP (C16orf84 Antibody) at dilution of 1:50 (under 40x lens).



Immunohistochemical analysis of paraffin-embedded human kidney tissue slide using 23337-1-AP (C16orf84 Antibody) at dilution of 1:50 (under 40x lens).



Immunofluorescent analysis of (-20°C Ethanol) fixed HEK-293 cells using C16orf84 antibody (23337-1-AP) at dilution of 1:400 and Coralite®488-Conjugated Goat Anti-Rabbit IgG(H+L) (SA00013-2).