

For Research Use Only

# Chromogranin A Polyclonal antibody

Catalog Number: 23342-1-AP

2 Publications



## Basic Information

<b>Catalog Number:</b> 23342-1-AP	<b>GenBank Accession Number:</b> BC006459	<b>Purification Method:</b> Antigen affinity purification
<b>Size:</b> 150ul , Concentration: 1000 ug/ml by Nanodrop;	<b>GeneID (NCBI):</b> 1113	<b>Recommended Dilutions:</b> IHC 1:500-1:2000
<b>Source:</b> Rabbit	<b>UNIPROT ID:</b> P10645	IF-P 1:50-1:500
<b>Isotype:</b> IgG	<b>Full Name:</b> chromogranin A (parathyroid secretory protein 1)	IF/ICC 1:200-1:800
<b>Immunogen Catalog Number:</b> AG19780	<b>Calculated MW:</b> 51 kDa	

## Applications

**Tested Applications:**  
IHC, IF/ICC, IF-P, ELISA

**Cited Applications:**  
WB, IF

**Species Specificity:**  
human, mouse

**Cited Species:**  
human, mouse

**Positive Controls:**

**IHC :** mouse pancreas tissue, human lung cancer tissue, human small intestine tissue, human colon tissue, mouse colon tissue, human appendicitis tissue

**IF-P :** mouse small intestine tissue,

**IF/ICC :** Neuro-2a cells,

**Note-IHC: suggested antigen retrieval with TE buffer pH 9.0; (\*) Alternatively, antigen retrieval may be performed with citrate buffer pH 6.0**

## Background Information

Chromogranin A is a member of the granin family of neuroendocrine secretory proteins. It is located in secretory vesicles of neurons and endocrine cells. Chromogranin A is the precursor to several functional peptides including vasostatin, pancreastatin, catestatin and parastatin. These peptides negatively modulate the neuroendocrine function of the releasing cell (autocrine) or nearby cells (paracrine). CgA is one of the most used tumor markers in NET's (neuroendocrine tumors), and elevated CgA concentrations have been demonstrated in serum or plasma of patients with different types of these tumors.

## Notable Publications

Author	Pubmed ID	Journal	Application
Buqing Ye	32449550	EMBO J	WB
Pawan Puri	35690337	Cell Mol Gastroenterol Hepatol	IF

## Storage

**Storage:**

Store at -20°C. Stable for one year after shipment.

**Storage Buffer:**

PBS with 0.02% sodium azide and 50% glycerol pH 7.3.

Aliquoting is unnecessary for -20°C storage

\*\*\* 20ul sizes contain 0.1% BSA

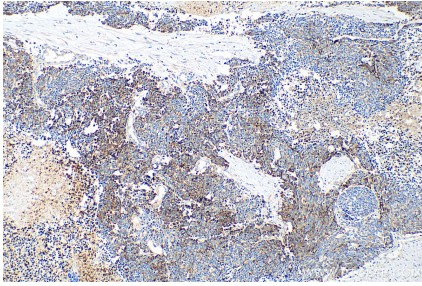
For technical support and original validation data for this product please contact:

T: 1 (888) 4PTGLAB (1-888-478-4522) (toll free in USA), or 1(312) 455-8498 (outside USA)

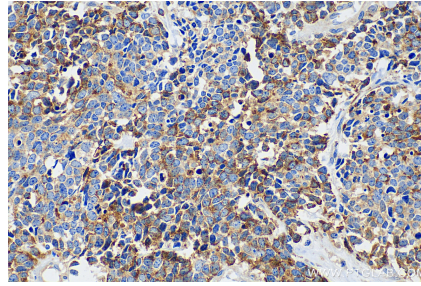
E: [proteintech@ptglab.com](mailto:proteintech@ptglab.com)  
W: [ptglab.com](http://ptglab.com)

This product is exclusively available under Proteintech Group brand and is not available to purchase from any other manufacturer.

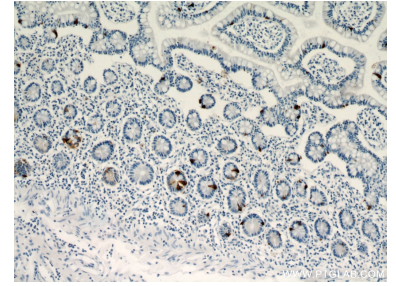
## Selected Validation Data



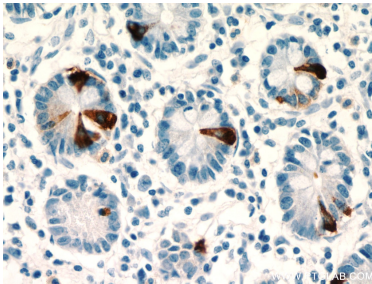
Immunohistochemical analysis of paraffin-embedded human lung cancer tissue slide using 23342-1-AP (Chromogranin A antibody) at dilution of 1:1000 (under 10x lens). Heat mediated antigen retrieval with Tris-EDTA buffer (pH 9.0).



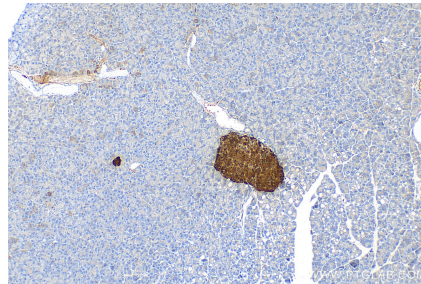
Immunohistochemical analysis of paraffin-embedded human lung cancer tissue slide using 23342-1-AP (Chromogranin A antibody) at dilution of 1:1000 (under 40x lens). Heat mediated antigen retrieval with Tris-EDTA buffer (pH 9.0).



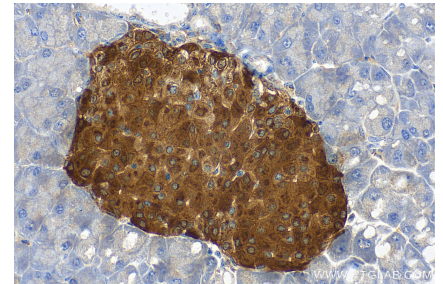
Immunohistochemical analysis of paraffin-embedded human small intestine using 23342-1-AP (Chromogranin A antibody) at dilution of 1:800 (under 10x lens).



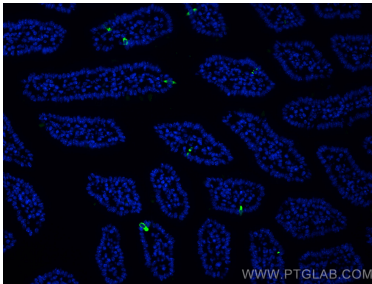
Immunohistochemical analysis of paraffin-embedded human small intestine using 23342-1-AP (Chromogranin A antibody) at dilution of 1:800 (under 40x lens).



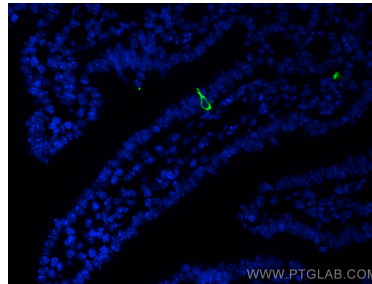
Immunohistochemical analysis of paraffin-embedded mouse pancreas tissue slide using 23342-1-AP (Chromogranin A antibody) at dilution of 1:1000 (under 10x lens). Heat mediated antigen retrieval with Tris-EDTA buffer (pH 9.0).



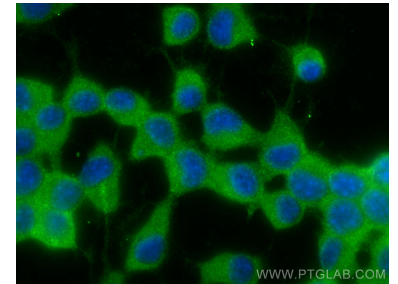
Immunohistochemical analysis of paraffin-embedded mouse pancreas tissue slide using 23342-1-AP (Chromogranin A antibody) at dilution of 1:1000 (under 40x lens). Heat mediated antigen retrieval with Tris-EDTA buffer (pH 9.0).



Immunofluorescent analysis of (4% PFA) fixed paraffin-embedded mouse small intestine tissue using Chromogranin A antibody (23342-1-AP) at dilution of 1:200 and CoraLite®488-Conjugated AffiniPure Goat Anti-Rabbit IgG(H+L) (SA00013-2). Heat mediated antigen retrieval with Tris-EDTA buffer (pH 9.0).



Immunofluorescent analysis of (4% PFA) fixed paraffin-embedded mouse small intestine tissue using Chromogranin A antibody (23342-1-AP) at dilution of 1:200 and CoraLite®488-Conjugated AffiniPure Goat Anti-Rabbit IgG(H+L) (SA00013-2). Heat mediated antigen retrieval with Tris-EDTA buffer (pH 9.0).



Immunofluorescent analysis of (-20°C Ethanol) fixed Neuro-2a cells using Chromogranin A antibody (23342-1-AP) at dilution of 1:400 and CoraLite®488-Conjugated AffiniPure Goat Anti-Rabbit IgG(H+L).