

For Research Use Only

AMOTL2 Polyclonal antibody

Catalog Number: 23351-1-AP

Featured Product

10 Publications



Basic Information

Catalog Number:

23351-1-AP

Size:

150ul, Concentration: 700 ug/ml by Nanodrop and 400 ug/ml by Bradford method using BSA as the standard;

Source:

Rabbit

Isotype:

IgG

Immunogen Catalog Number:

AG19953

GenBank Accession Number:

BC011454

GeneID (NCBI):

51421

UNIPROT ID:

Q9Y2J4

Full Name:

angiotensin like 2

Calculated MW:

779 aa, 86 kDa

Observed MW:

100 kDa

Purification Method:

Antigen affinity purification

Recommended Dilutions:

WB 1:1000-1:6000

Applications

Tested Applications:

WB, ELISA

Cited Applications:

WB, IF, CoIP

Species Specificity:

human

Cited Species:

human

Positive Controls:

WB : HEK-293 cells,

Background Information

Angiotensin-like 2 (AMOTL2) is a member of the motin family of angiotensin-binding proteins. The motin family, also known as AMOTs, consists of three members: AMOT, AMOT-like 1 (AMOTL1) and AMOTL2. Members of the motin family are a type of adaptor proteins mainly distributed in the cytomembrane, cytoplasm or nucleus, and have a higher expression in the endothelial cells of capillaries and in larger vessels of the placenta. Human AmotL2 encodes two isoforms of a molecular mass of 100 kDa and 60 kDa. (PMID: 34036399, PMID: 25080976)

Notable Publications

Author	Pubmed ID	Journal	Application
Diala Kantar	33707576	Sci Rep	WB
Patrizia Brunner	31800378	Mol Biol Cell	WB
Zengya Guo	32942233	Mol Ther Nucleic Acids	WB

Storage

Storage:

Store at -20°C. Stable for one year after shipment.

Storage Buffer:

PBS with 0.02% sodium azide and 50% glycerol pH 7.3.

Aliquoting is unnecessary for -20°C storage

*** 20ul sizes contain 0.1% BSA

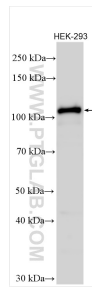
For technical support and original validation data for this product please contact:

T: 1 (888) 4PTGLAB (1-888-478-4522) (toll free in USA), or 1(312) 455-8498 (outside USA)

E: proteintech@ptglab.com
W: ptglab.com

This product is exclusively available under Proteintech Group brand and is not available to purchase from any other manufacturer.

Selected Validation Data



HEK-293 cells lysates were subjected to SDS PAGE followed by western blot with 23351-1-AP (AMOTL2 antibody) at dilution of 1:3000 incubated at room temperature for 1.5 hours.