

For Research Use Only

# FCHSD1 Polyclonal antibody

Catalog Number: 23362-1-AP

1 Publications



## Basic Information

<b>Catalog Number:</b> 23362-1-AP	<b>GenBank Accession Number:</b> BC047016	<b>Purification Method:</b> Antigen affinity purification
<b>Size:</b> 150ul , Concentration: 550 ug/ml by Nanodrop and 400 ug/ml by Bradford method using BSA as the standard;	<b>GeneID (NCBI):</b> 89848	<b>Recommended Dilutions:</b> WB 1:500-1:2000 IHC 1:50-1:500 IF-P 1:50-1:500
<b>Source:</b> Rabbit	<b>UNIPROT ID:</b> Q86WN1	
<b>Isotype:</b> IgG	<b>Full Name:</b> FCH and double SH3 domains 1	
<b>Immunogen Catalog Number:</b> AG19963	<b>Calculated MW:</b> 690 aa, 77 kDa	
	<b>Observed MW:</b> 46-50 kDa	

## Applications

<b>Tested Applications:</b> WB, IHC, IF-P, ELISA	<b>Positive Controls:</b> WB : HEK-293 cells, K-562 cells, HeLa cells, Jurkat cells
<b>Cited Applications:</b> WB	<b>IHC :</b> human breast cancer tissue,
<b>Species Specificity:</b> human, mouse	<b>IF-P :</b> mouse kidney tissue,
<b>Cited Species:</b> mouse	

**Note-IHC: suggested antigen retrieval with TE buffer pH 9.0; (\*) Alternatively, antigen retrieval may be performed with citrate buffer pH 6.0**

## Background Information

FCHSD1 (FCH and double SH3 domains 1), also known as NWK2, is a member of the F-BAR family, which is involved in endocytosis and vesicle trafficking. FCHSD1 is expressed in mouse cochlear sensory hair cells and plays an important role in regulating the assembly or maintenance of F-actin in hair cell stereocilia and cuticular plate (PMID: 23437151). FCHSD1 also plays a role in stress response sensing and oxidative stress integration and is involved in the pathogenesis of emphysema (PMID: 34168078). FCHSD1 has three isoforms with molecular weights of 77 kDa, 46 kDa, and 40 kDa.

## Notable Publications

Author	Pubmed ID	Journal	Application
Takahiro Kawasaki	34168078	Proc Natl Acad Sci U S A	WB

## Storage

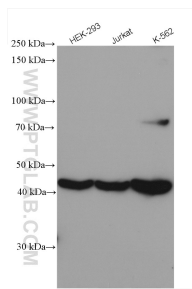
**Storage:**  
Store at -20°C. Stable for one year after shipment.  
**Storage Buffer:**  
PBS with 0.02% sodium azide and 50% glycerol pH 7.3.  
Aliquoting is unnecessary for -20°C storage

\*\*\* 20ul sizes contain 0.1% BSA

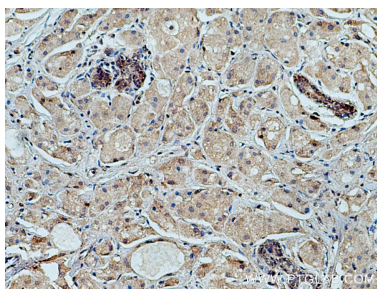
For technical support and original validation data for this product please contact:  
T: 1 (888) 4PTGLAB (1-888-478-4522) (toll free in USA), or 1(312) 455-8498 (outside USA)  
E: proteintech@ptglab.com  
W: ptglab.com

This product is exclusively available under Proteintech Group brand and is not available to purchase from any other manufacturer.

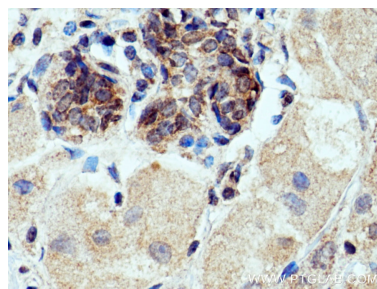
## Selected Validation Data



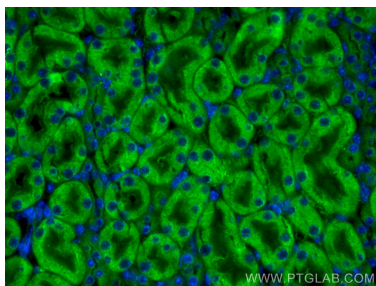
Various lysates were subjected to SDS PAGE followed by western blot with 23362-1-AP (FCHSD1 antibody) at dilution of 1:1000 incubated at room temperature for 1.5 hours.



Immunohistochemical analysis of paraffin-embedded human breast cancer tissue slide using 23362-1-AP (FCHSD1 antibody) at dilution of 1:200 (under 10x lens). Heat mediated antigen retrieval with Tris-EDTA buffer (pH 9.0).



Immunohistochemical analysis of paraffin-embedded human breast cancer tissue slide using 23362-1-AP (FCHSD1 antibody) at dilution of 1:200 (under 40x lens). Heat mediated antigen retrieval with Tris-EDTA buffer (pH 9.0).



Immunofluorescent analysis of (4% PFA) fixed mouse kidney tissue using FCHSD1 antibody (23362-1-AP) at dilution of 1:200 and CoraLite®488-Conjugated Goat Anti-Rabbit IgG(H+L).