

For Research Use Only

FKBPL Polyclonal antibody

Catalog Number: 23369-1-AP



Basic Information

Catalog Number: 23369-1-AP	GenBank Accession Number: BC004168	Purification Method: Antigen affinity purification
Size: 150ul , Concentration: 1500 ug/ml by Nanodrop and 440 ug/ml by Bradford method using BSA as the standard;	GeneID (NCBI): 63943	Recommended Dilutions: WB 1:500-1:1000
Source: Rabbit	UNIPROT ID: Q9UIM3	IHC 1:100-1:400
Isotype: IgG	Full Name: FK506 binding protein like	IF/ICC 1:200-1:800
Immunogen Catalog Number: AG19702	Calculated MW: 349 aa, 38 kDa	
	Observed MW: 42-48 kDa	

Applications

Tested Applications: WB, IHC, IF/ICC, FC (Intra), ELISA	Positive Controls:
Species Specificity: human	WB : HeLa cells,
Note-IHC: suggested antigen retrieval with TE buffer pH 9.0; (*) Alternatively, antigen retrieval may be performed with citrate buffer pH 6.0	IHC : human ovary tumor tissue,
	IF/ICC : HeLa cells,

Background Information

FKBPL, also named as DIR1, NG7 and WISp39, has similarity to the immunophilin protein family, which plays a role in immunoregulation and basic cellular processes involving protein folding and trafficking. FKBPL levels may be a prognostic indicator and determinant of response to endocrine therapy(PMID:20103631, 15664193) .It can be detected the band between 38 kDa and 48 kDa by western blot.

Storage

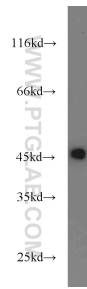
Storage:
Store at -20°C. Stable for one year after shipment.
Storage Buffer:
PBS with 0.02% sodium azide and 50% glycerol pH 7.3.
Aliquoting is unnecessary for -20°C storage

*** 20ul sizes contain 0.1% BSA

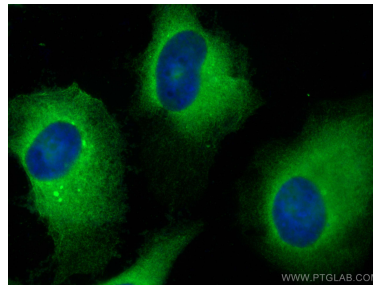
For technical support and original validation data for this product please contact:
T: 1 (888) 4PTGLAB (1-888-478-4522) (toll free in USA), or 1(312) 455-8498 (outside USA)
E: proteintech@ptglab.com
W: ptglab.com

This product is exclusively available under Proteintech Group brand and is not available to purchase from any other manufacturer.

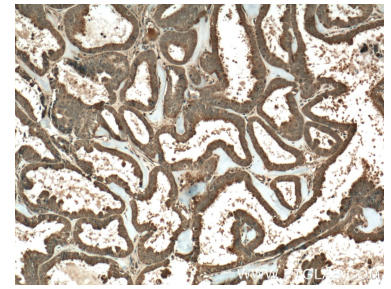
Selected Validation Data



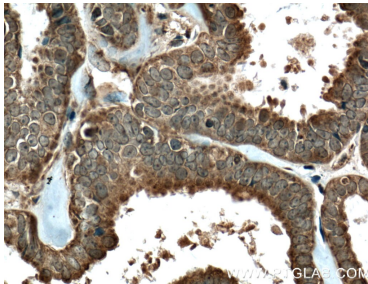
HeLa cells were subjected to SDS PAGE followed by western blot with 23369-1-AP (FKBPL antibody) at dilution of 1:800 incubated at room temperature for 1.5 hours.



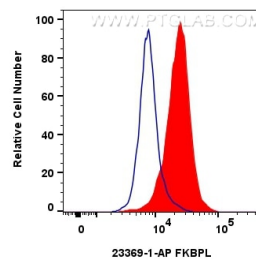
Immunofluorescent analysis of (-20°C Methanol) fixed HeLa cells using FKBP antibody (23369-1-AP) at dilution of 1:400 and CoraLite®488-Conjugated AffiniPure Goat Anti-Rabbit IgG(H+L) (SA00013-2).



Immunohistochemical analysis of paraffin-embedded human ovary tumor tissue slide using 23369-1-AP (FKBPL Antibody) at dilution of 1:200 (under 10x lens). Heat mediated antigen retrieval with Tris-EDTA buffer (pH 9.0).



Immunohistochemical analysis of paraffin-embedded human ovary tumor tissue slide using 23369-1-AP (FKBPL Antibody) at dilution of 1:200 (under 40x lens). Heat mediated antigen retrieval with Tris-EDTA buffer (pH 9.0).



1x10⁶ HeLa cells were intracellularly stained with 0.4 ug FKBP Polyclonal antibody (23369-1-AP) and CoraLite®488-Conjugated AffiniPure Goat Anti-Rabbit IgG(H+L) (SA00013-2)(red), or 0.4 ug Rabbit IgG control Rabbit PolyAb (30000-0-AP) (blue). Cells were fixed with 4% PFA and permeabilized with Flow Cytometry Perm Buffer (PF00011-C).