

For Research Use Only

# KLF2 Polyclonal antibody

Catalog Number: 23384-1-AP

Featured Product

1 Publications



## Basic Information

<b>Catalog Number:</b> 23384-1-AP	<b>GenBank Accession Number:</b> BC071983	<b>Purification Method:</b> Antigen Affinity purified
<b>Size:</b> 150ul , Concentration: 1000 µg/ml by Nanodrop;	<b>GeneID (NCBI):</b> 10365	<b>Recommended Dilutions:</b> WB 1:500-1:1000
<b>Source:</b> Rabbit	<b>Full Name:</b> Kruppel-like factor 2 (Lung)	
<b>Isotype:</b> IgG	<b>Calculated MW:</b> 355 aa, 37 kDa	
<b>Immunogen Catalog Number:</b> AG20019	<b>Observed MW:</b> 37-40 kDa, 60 kDa	

## Applications

<b>Tested Applications:</b> WB, ELISA	<b>Positive Controls:</b> WB : HepG2 cells, bEnd.3 cells
<b>Cited Applications:</b> IP, WB	
<b>Species Specificity:</b> human, mouse	
<b>Cited Species:</b> human	

## Background Information

KLF2 (Kruppel-like Factor 2) belongs to zinc finger transcription factors, and it is implicated in a variety of biochemical processes, including lung development, embryonic erythropoiesis, epithelial integrity, T-cell viability, and adipogenesis (PMID: 17904406). KLF2 was identified as a negative regulator of T cell activation and adipogenesis. KLF2 also acts as a novel regulator of endothelial proinflammatory activation, inhibiting the inflammatory cytokine-mediated induction of adhesion molecule expression and immune cell adhesion (PMID:15718498). KLF2-null mice exhibit abnormal blood vessel formation, resulting in embryonic haemorrhage and death (PMID: 32132543). KLF2 can be detected 60 kDa by post-translationally modified (PMID: 36466816).

## Notable Publications

Author	Pubmed ID	Journal	Application
R Pathak	25039491	J Thromb Haemost	WB,IP

## Storage

**Storage:**  
Store at -20°C. Stable for one year after shipment.  
**Storage Buffer:**  
PBS with 0.02% sodium azide and 50% glycerol pH 7.3.  
Aliquoting is unnecessary for -20°C storage

\*\*\* 20ul sizes contain 0.1% BSA

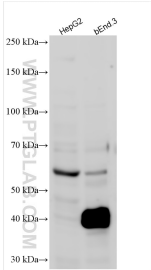
For technical support and original validation data for this product please contact:

T: 1 (888) 4PTGLAB (1-888-478-4522) (toll free in USA), or 1(312) 455-8498 (outside USA)

E: proteintech@ptglab.com  
W: ptglab.com

This product is exclusively available under Proteintech Group brand and is not available to purchase from any other manufacturer.

# Selected Validation Data



Various lysates were subjected to SDS PAGE followed by western blot with 23384-1-AP (KLF2 antibody) at dilution of 1:800 incubated at room temperature for 1.5 hours.