

For Research Use Only

KLF2 Polyclonal antibody, PBS Only

Catalog Number: 23384-1-PBS

Featured Product



Basic Information

Catalog Number:

23384-1-PBS

Size:

100ug, Concentration: 1 mg/ml by Nanodrop;

Source:

Rabbit

Isotype:

IgG

Immunogen Catalog Number:

AG20019

GenBank Accession Number:

BC071983

GeneID (NCBI):

10365

UNIPROT ID:

Q9Y5W3

Full Name:

Kruppel-like factor 2 (lung)

Calculated MW:

355 aa, 37 kDa

Observed MW:

37-40 kDa, 60 kDa

Purification Method:

Antigen Affinity purified

Applications

Tested Applications:

WB, Indirect ELISA

Species Specificity:

human, mouse

Background Information

KLF2 (Kruppel-like Factor 2) belongs to zinc finger transcription factors, and it is implicated in a variety of biochemical processes, including lung development, embryonic erythropoiesis, epithelial integrity, T-cell viability, and adipogenesis (PMID: 17904406). KLF2 was identified as a negative regulator of T cell activation and adipogenesis. KLF2 also acts as a novel regulator of endothelial proinflammatory activation, inhibiting the inflammatory cytokine-mediated induction of adhesion molecule expression and immune cell adhesion (PMID:15718498). KLF2-null mice exhibit abnormal blood vessel formation, resulting in embryonic haemorrhage and death (PMID: 32132543). KLF2 can be detected 60 kDa by post-translationally modified (PMID: 36466816).

Storage

Storage:

Store at -80°C.

Storage Buffer:

PBS only, pH7.3

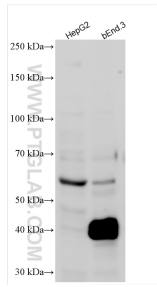
For technical support and original validation data for this product please contact:

T: 1 (888) 4PTGLAB (1-888-478-4522) (toll free in USA), or 1(312) 455-8498 (outside USA)

E: proteintech@ptglab.com
W: ptglab.com

This product is exclusively available under Proteintech Group brand and is not available to purchase from any other manufacturer.

Selected Validation Data



Various lysates were subjected to SDS PAGE followed by western blot with 23384-1-AP (KLF2 antibody) at dilution of 1:800 incubated at room temperature for 1.5 hours. This data was developed using the same antibody clone with 23384-1-PBS in a different storage buffer formulation.