

For Research Use Only

SGK1 Polyclonal antibody

Catalog Number: 23394-1-AP **5 Publications**



Basic Information

Catalog Number: 23394-1-AP	GenBank Accession Number: BC001263	Purification Method: Antigen affinity purification
Size: 150ul , Concentration: 1000 µg/ml by Nanodrop and 413 µg/ml by Bradford method using BSA as the standard;	GeneID (NCBI): 6446	Recommended Dilutions: IP 0.5-4.0 ug for 1.0-3.0 mg of total protein lysate IHC 1:20-1:200 IF 1:10-1:100
Source: Rabbit	UNIPROT ID: O00141	
Isotype: IgG	Full Name: serum/glucocorticoid regulated kinase 1	
Immunogen Catalog Number: AG17888	Calculated MW: 431 aa, 49 kDa	

Applications

Tested Applications: IP, IF, FC, IHC, ELISA	Positive Controls: IP : HEK-293 cells, IHC : human pancreas tissue, human breast cancer tissue IF : HEK-293 cells,
Cited Applications: IHC	
Species Specificity: human, mouse	
Cited Species: human, mouse	
Note-IHC: suggested antigen retrieval with TE buffer pH 9.0; (*) Alternatively, antigen retrieval may be performed with citrate buffer pH 6.0	

Background Information

Serum- and glucocorticoid-induced kinase 1 (SGK1), also named as SGK, is a S/T protein kinase that belongs to the AGC (cAMP-dependent, cGMP-dependent, and protein kinase C) kinase family. It is expressed in many cell types and participates in numerous cellular processes and it is ubiquitinated and degraded at the ER membrane (PMID: 16847254). The N-terminal motif of SGK1 is critical for its ubiquitination and degradation (PMID: 16817852). SGK and Akt are likely to phosphorylate related substrates, as they share a similar consensus phosphorylation site (RXRXXS/T) (PMID: 11154281). It has 5 isoforms produced by alternative promoter usage and alternative splicing.

Notable Publications

Author	Pubmed ID	Journal	Application
Huaxin Zhou	25993992	FASEB J	
Junling Ren	34162726	J Immunol	
Yunzhi Liu	35671705	J Innate Immun	

Storage

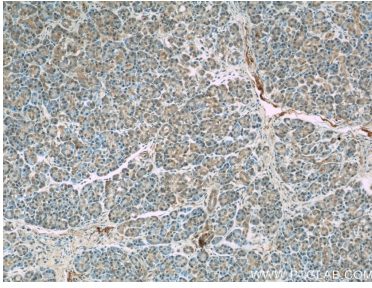
Storage:
Store at -20°C. Stable for one year after shipment.
Storage Buffer:
PBS with 0.02% sodium azide and 50% glycerol pH 7.3.
Aliquoting is unnecessary for -20°C storage

*** 20ul sizes contain 0.1% BSA

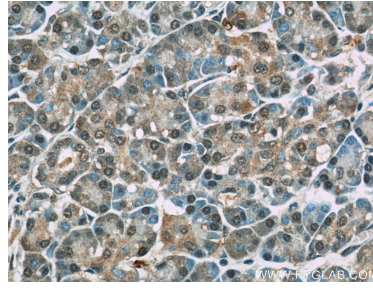
For technical support and original validation data for this product please contact:
T: 1 (888) 4PTGLAB (1-888-478-4522) (toll free in USA), or 1(312) 455-8498 (outside USA)
E: proteintech@ptglab.com
W: ptglab.com

This product is exclusively available under Proteintech Group brand and is not available to purchase from any other manufacturer.

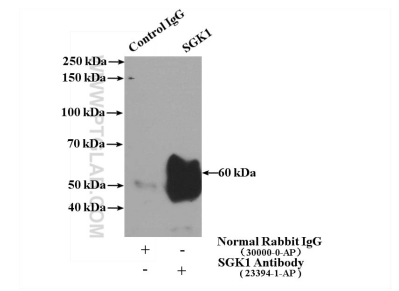
Selected Validation Data



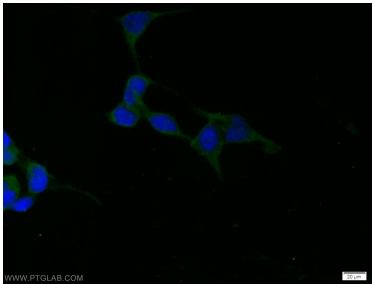
Immunohistochemical analysis of paraffin-embedded human pancreas slide using 23394-1-AP (SGK1 Antibody) at dilution of 1:50.



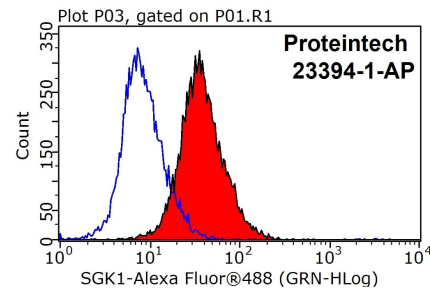
Immunohistochemical analysis of paraffin-embedded human pancreas slide using 23394-1-AP (SGK1 Antibody) at dilution of 1:50.



IP result of anti-SGK1 (IP:23394-1-AP, 4ug; Detection:23394-1-AP 1:600) with HEK-293 cells lysate 1480ug.



Immunofluorescent analysis of HEK-293 cells using 23394-1-AP (SGK1 antibody) at dilution of 1:25 and Alexa Fluor 488-conjugated AffiniPure Goat Anti-Rabbit IgG(H+L).



1X10⁶ HeLa cells were stained with 0.2ug SGK1 antibody (23394-1-AP, red) and control antibody (blue). Fixed with 90% MeOH blocked with 3% BSA (30 min). Alexa Fluor 488-conjugated AffiniPure Goat Anti-Rabbit IgG(H+L) with dilution 1:1000.