

For Research Use Only

# WDR62 Polyclonal antibody, PBS Only

Catalog Number: 23404-1-PBS



## Basic Information

**Catalog Number:**

23404-1-PBS

**Size:**

100ug, Concentration: 1 mg/ml by Nanodrop;

**Source:**

Rabbit

**Isotype:**

IgG

**Immunogen Catalog Number:**

AG19865

**GenBank Accession Number:**

BC017261

**GeneID (NCBI):**

284403

**UNIPROT ID:**

O43379

**Full Name:**

WD repeat domain 62

**Calculated MW:**

1518 aa, 166 kDa

**Observed MW:**

180 kDa

**Purification Method:**

Antigen Affinity purified

## Applications

**Tested Applications:**

IHC, IF/ICC, IP, Indirect ELISA

**Species Specificity:**

human, mouse

## Background Information

The WD40-repeat protein 62 (WDR62) is a scaffold protein that recruits different components of the JNK signaling pathway to regulate several human diseases including neurological disorders, infertility, and tumorigenesis (PMID: 33937237). Moreover, WDR62 participates in diverse biological processes, especially mitotic spindle organization via regulating centriole biogenesis and the function of centriole-associated protein (PMID: 35093571).

## Storage

**Storage:**

Store at -80°C.

**Storage Buffer:**

PBS only, pH7.3

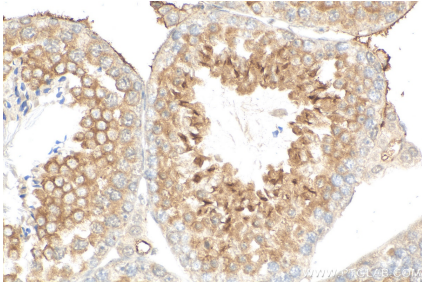
For technical support and original validation data for this product please contact:

T: 1 (888) 4PTGLAB (1-888-478-4522) (toll free in USA), or 1(312) 455-8498 (outside USA)

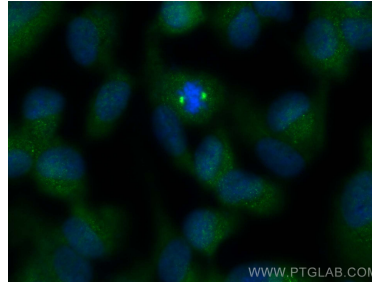
E: [proteintech@ptglab.com](mailto:proteintech@ptglab.com)  
W: [ptglab.com](http://ptglab.com)

**This product is exclusively available under Proteintech Group brand and is not available to purchase from any other manufacturer.**

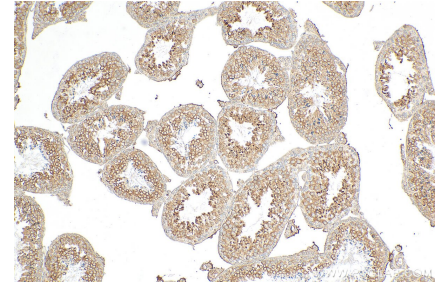
## Selected Validation Data



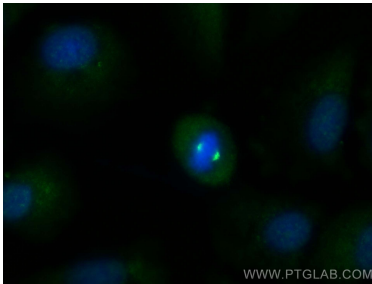
Immunohistochemical analysis of paraffin-embedded mouse testis tissue slide using 23404-1-AP (WDR62 antibody) at dilution of 1:200 (under 40x lens). Heat mediated antigen retrieval with Tris-EDTA buffer (pH 9.0). This data was developed using the same antibody clone with 23404-1-PBS in a different storage buffer formulation.



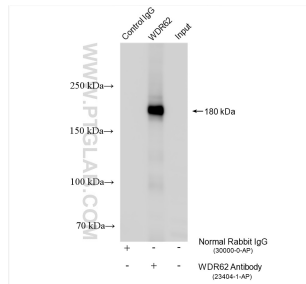
Immunofluorescent analysis of (-20°C Methanol) fixed hTERT-RPE1 cells using WDR62 antibody (23404-1-AP) at dilution of 1:400 and CoraLite®488-Conjugated AffiniPure Goat Anti-Rabbit IgG(H+L). This data was developed using the same antibody clone with 23404-1-PBS in a different storage buffer formulation.



Immunohistochemical analysis of paraffin-embedded mouse testis tissue slide using 23404-1-AP (WDR62 antibody) at dilution of 1:200 (under 10x lens). Heat mediated antigen retrieval with Tris-EDTA buffer (pH 9.0). This data was developed using the same antibody clone with 23404-1-PBS in a different storage buffer formulation.



Immunofluorescent analysis of (-20°C Methanol) fixed A549 cells using WDR62 antibody (23404-1-AP) at dilution of 1:400 and CoraLite®488-Conjugated AffiniPure Goat Anti-Rabbit IgG(H+L). This data was developed using the same antibody clone with 23404-1-PBS in a different storage buffer formulation.



IP result of anti-WDR62 (IP:23404-1-AP, 4ug; Detection:23404-1-AP 1:500) with HEK-293T cells lysate 1320 ug. This data was developed using the same antibody clone with 23404-1-PBS in a different storage buffer formulation.