

For Research Use Only

# DOCK180 Polyclonal antibody

Catalog Number: 23421-1-AP **3 Publications**



## Basic Information

<b>Catalog Number:</b> 23421-1-AP	<b>GenBank Accession Number:</b> BC146857	<b>Purification Method:</b> Antigen affinity purification
<b>Size:</b> 150ul , Concentration: 1000 µg/ml by Nanodrop and 440 µg/ml by Bradford method using BSA as the standard;	<b>GeneID (NCBI):</b> 1793	<b>Recommended Dilutions:</b> WB 1:500-1:2000 IP 0.5-4.0 ug for IP and 1:500-1:2000 for WB
<b>Source:</b> Rabbit	<b>Full Name:</b> dedicator of cytokinesis 1	<b>IHC 1:20-1:200</b>
<b>Isotype:</b> IgG	<b>Calculated MW:</b> 1865 aa, 215 kDa	<b>IF 1:10-1:100</b>
<b>Immunogen Catalog Number:</b> AG18069	<b>Observed MW:</b> 215 kDa	

## Applications

<b>Tested Applications:</b> IF, IHC, IP, WB, ELISA	<b>Positive Controls:</b> WB : HEK-293 cells, LNCaP cells, MCF-7 cells, A431 cells, HeLa cells
<b>Cited Applications:</b> WB	<b>IP :</b> HeLa cells,
<b>Species Specificity:</b> human	<b>IHC :</b> human colon tissue,
<b>Cited Species:</b> mouse, zebrafish	<b>IF :</b> HeLa cells,

**Note-IHC: suggested antigen retrieval with TE buffer pH 9.0; (\*) Alternatively, antigen retrieval may be performed with citrate buffer pH 6.0**

## Background Information

### Notable Publications

Author	Pubmed ID	Journal	Application
Xujuan Sun	29802377	Cell Death Dis	WB
Hua Qu	33627322	Diabetes	WB
Ryan A Doan	37961336	bioRxiv	WB

## Storage

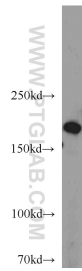
**Storage:**  
Store at -20°C. Stable for one year after shipment.  
**Storage Buffer:**  
PBS with 0.02% sodium azide and 50% glycerol pH 7.3.  
Aliquoting is unnecessary for -20°C storage

\*\*\* 20ul sizes contain 0.1% BSA

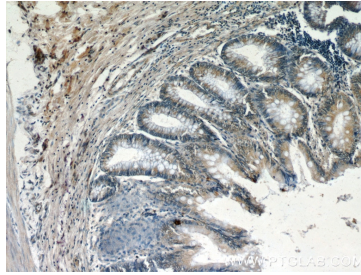
For technical support and original validation data for this product please contact:  
T: 1 (888) 4PTGLAB (1-888-478-4522) (toll free in USA), or 1(312) 455-8498 (outside USA)  
E: proteintech@ptglab.com  
W: ptglab.com

This product is exclusively available under Proteintech Group brand and is not available to purchase from any other manufacturer.

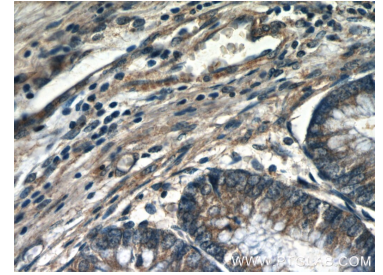
## Selected Validation Data



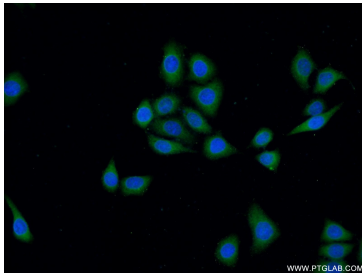
HEK-293 cells were subjected to SDS PAGE followed by western blot with 23421-1-AP (DOCK180 antibody) at dilution of 1:1000 incubated at room temperature for 1.5 hours.



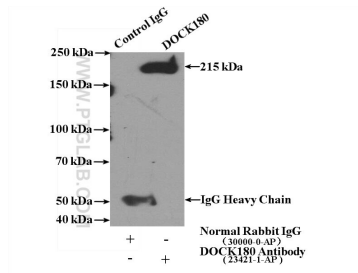
Immunohistochemical analysis of paraffin-embedded human colon slide using 23421-1-AP (DOCK180 antibody at dilution of 1:50.



Immunohistochemical analysis of paraffin-embedded human colon slide using 23421-1-AP (DOCK180 antibody at dilution of 1:50.



Immunofluorescent analysis of (-20°C Ethanol) fixed HeLa cells using 23421-1-AP (DOCK180 antibody) at dilution of 1:25 and Alexa Fluor 488-conjugated AffiniPure Goat Anti-Rabbit IgG(H+L).



IP Result of anti-DOCK180 (IP:23421-1-AP, 4ug; Detection:23421-1-AP 1:1000) with HeLa cells lysate 3200ug.