

For Research Use Only

KHDC1 Polyclonal antibody

Catalog Number: 23443-1-AP



Basic Information

Catalog Number: 23443-1-AP	GenBank Accession Number: BC022080	Purification Method: Antigen Affinity purified
Size: 150ul , Concentration: 500 ug/ml by Nanodrop and 360 ug/ml by Bradford method using BSA as the standard;	GeneID (NCBI): 80759	Recommended Dilutions: WB 1:500-1:1000 IHC 1:50-1:500
Source: Rabbit	UNIPROT ID: Q4VXA5	
Isotype: IgG	Full Name: KH homology domain containing 1	
Immunogen Catalog Number: AG20115	Calculated MW: 237 aa, 27 kDa	
	Observed MW: 35-40 kDa	

Applications

Tested Applications: WB, IHC, ELISA	Positive Controls:
Species Specificity: human	WB : L02 cells,
Note-IHC: suggested antigen retrieval with TE buffer pH 9.0; (*) Alternatively, antigen retrieval may be performed with citrate buffer pH 6.0	IHC : human stomach cancer tissue, human liver tissue, human stomach tissue

Background Information

KHDC1, also named as C6orf148, belongs to the KHDC1 family. KHDC1 has two isoforms with calculated MW 27 kDa and 18 kDa. It's a membrane protein. We got 35-40 kDa in our WB detection.

Storage

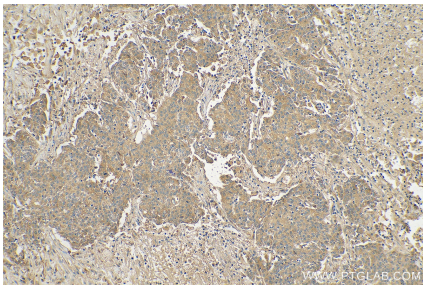
Storage:
Store at -20°C. Stable for one year after shipment.
Storage Buffer:
PBS with 0.02% sodium azide and 50% glycerol pH 7.3.
Aliquoting is unnecessary for -20°C storage

*** 20ul sizes contain 0.1% BSA

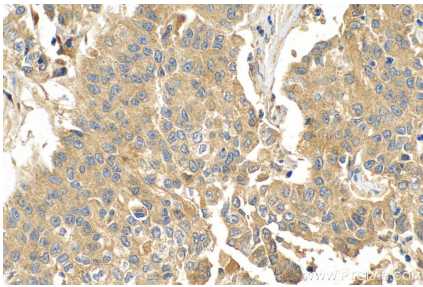
For technical support and original validation data for this product please contact:
T: 1 (888) 4PTGLAB (1-888-478-4522) (toll free in USA), or 1(312) 455-8498 (outside USA)
E: proteintech@ptglab.com
W: ptglab.com

This product is exclusively available under Proteintech Group brand and is not available to purchase from any other manufacturer.

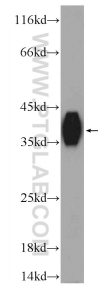
Selected Validation Data



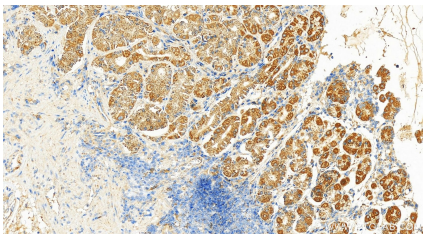
Immunohistochemical analysis of paraffin-embedded human stomach cancer tissue slide using 23443-1-AP (KHDC1 antibody) at dilution of 1:100 (under 10x lens). Heat mediated antigen retrieval with Tris-EDTA buffer (pH 9.0).



Immunohistochemical analysis of paraffin-embedded human stomach cancer tissue slide using 23443-1-AP (KHDC1 antibody) at dilution of 1:100 (under 40x lens). Heat mediated antigen retrieval with Tris-EDTA buffer (pH 9.0).



L02 cells were subjected to SDS PAGE followed by western blot with 23443-1-AP (KHDC1 Antibody) at dilution of 1:600 incubated at room temperature for 1.5 hours.



Immunohistochemical analysis of paraffin-embedded human normal stomach slide using 23443-1-AP (KHDC1 antibody) at dilution of 1:200 (under 20x lens). Heat mediated antigen retrieval with Tris-EDTA buffer (pH 9.0).