

For Research Use Only

ESF1 Polyclonal antibody

Catalog Number: 23496-1-AP

2 Publications



Basic Information

Catalog Number:

23496-1-AP

Size:

150ul, Concentration: 700 ug/ml by Nanodrop and 333 ug/ml by Bradford method using BSA as the standard;

Source:

Rabbit

Isotype:

IgG

Immunogen Catalog Number:

AG19037

GenBank Accession Number:

BC146542

GeneID (NCBI):

51575

UNIPROT ID:

Q9H501

Full Name:

ESF1, nucleolar pre-rRNA processing protein, homolog (S. cerevisiae)

Calculated MW:

851 aa, 99 kDa

Observed MW:

100-110 kDa

Purification Method:

Antigen Affinity purified

Recommended Dilutions:

WB 1:1000-1:4000

IF/ICC 1:20-1:200

Applications

Tested Applications:

WB, IF/ICC, ELISA

Cited Applications:

WB, IHC, IF

Species Specificity:

human, mouse

Cited Species:

human

Positive Controls:

WB : mouse heart tissue,

IF/ICC : MCF-7 cells,

Notable Publications

Author	Pubmed ID	Journal	Application
S A Quinodoz	39386460	bioRxiv	IF
Qing Yu	39004717	Clin Proteomics	WB,IHC

Storage

Storage:

Store at -20°C. Stable for one year after shipment.

Storage Buffer:

PBS with 0.02% sodium azide and 50% glycerol pH 7.3.

Aliquoting is unnecessary for -20°C storage

*** 20ul sizes contain 0.1% BSA

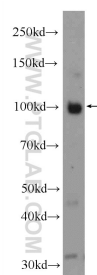
For technical support and original validation data for this product please contact:

T: 1 (888) 4PTGLAB (1-888-478-4522) (toll free in USA), or 1(312) 455-8498 (outside USA)

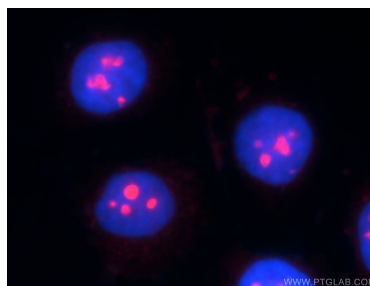
E: proteintech@ptglab.com
W: ptglab.com

This product is exclusively available under Proteintech Group brand and is not available to purchase from any other manufacturer.

Selected Validation Data



mouse heart tissue were subjected to SDS PAGE followed by western blot with 23496-1-AP (ESF1 Antibody) at dilution of 1:2000 incubated at room temperature for 1.5 hours.



Immunofluorescent analysis of MCF-7 cells using 23496-1-AP (ESF1 antibody) at dilution of 1:50 and Rhodamine-Goat anti-Rabbit IgG.