

For Research Use Only

ESF1 Polyclonal antibody, PBS Only

Catalog Number: 23496-1-PBS



Basic Information

Catalog Number:

23496-1-PBS

Size:

100ug, Concentration: 1 mg/ml by Nanodrop;

Source:

Rabbit

Isotype:

IgG

Immunogen Catalog Number:

AG19037

GenBank Accession Number:

BC146542

GeneID (NCBI):

51575

UNIPROT ID:

Q9H501

Full Name:

ESF1, nucleolar pre-rRNA processing protein, homolog (S. cerevisiae)

Calculated MW:

851 aa, 99 kDa

Observed MW:

100-110 kDa

Purification Method:

Antigen Affinity purified

Applications

Tested Applications:

WB, IF/ICC, Indirect ELISA

Species Specificity:

human, mouse

Storage

Storage:

Store at -80°C.

Storage Buffer:

PBS only, pH7.3

For technical support and original validation data for this product please contact:

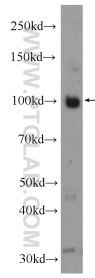
T: 1 (888) 4PTGLAB (1-888-478-4522) (toll free in USA), or 1(312) 455-8498 (outside USA)

E: proteintech@ptglab.com

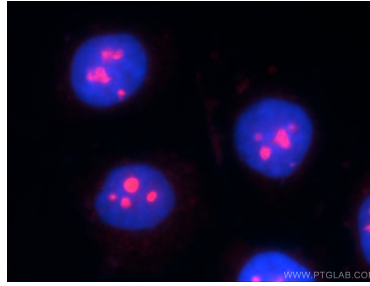
W: ptglab.com

This product is exclusively available under Proteintech Group brand and is not available to purchase from any other manufacturer.

Selected Validation Data



mouse heart tissue were subjected to SDS PAGE followed by western blot with 23496-1-AP (ESF1 Antibody) at dilution of 1:2000 incubated at room temperature for 1.5 hours. This data was developed using the same antibody clone with 23496-1-PBS in a different storage buffer formulation.



Immunofluorescent analysis of MCF-7 cells using 23496-1-AP (ESF1 antibody) at dilution of 1:50 and Rhodamine-Goat anti-Rabbit IgG. This data was developed using the same antibody clone with 23496-1-PBS in a different storage buffer formulation.