

For Research Use Only

Laminin beta 1 Polyclonal antibody

Catalog Number: 23498-1-AP

20 Publications



Basic Information

Catalog Number: 23498-1-AP	GenBank Accession Number: BC113455	Purification Method: Antigen affinity purification
Size: 150ul, Concentration: 650 µg/ml by Nanodrop and 333 µg/ml by Bradford method using BSA as the standard;	GeneID (NCBI): 3912	Recommended Dilutions: WB 1:500-1:2000 IP 0.5-4.0 ug for 1.0-3.0 mg of total protein lysate IF 1:20-1:200
Source: Rabbit	UNIPROT ID: P07942	
Isotype: IgG	Full Name: laminin, beta 1	
Immunogen Catalog Number: AG19182	Calculated MW: 1786 aa, 198 kDa	
	Observed MW: 220 kDa	

Applications

Tested Applications: IF, IP, WB, ELISA	Positive Controls: WB : NIH/3T3 cells, Jurkat cells
Cited Applications: WB, IHC, IF	IP : NIH/3T3 cells,
Species Specificity: human, mouse, rat	IF : HepG2 cells,
Cited Species: human, rat, mouse	

Background Information

Laminins are a family of basement membrane glycoproteins composed of three nonidentical chains, laminin alpha, beta and gamma (formerly A, B1, and B2, respectively) (PMID: 7959779). Laminins contribute to the structure of extracellular matrix and influence the behavior of associated cells, such as adhesion, differentiation, migration, phenotype stability, and resistance to anoikis (PMID: 23057746). Laminin beta 1 (LAMB1) is expressed in most tissues that produce basement membranes, and is one of the 3 chains constituting laminin-1, the first laminin isolated from Engelbreth-Holm-Swarm (EHS) tumor. Laminin beta 1 is also a subunit of laminin-2 (laminin-211 or merosin), laminin-6 (laminin-311 or K-laminin), laminin-8 (laminin-411), laminin-10 (laminin-511) and laminin-12 (laminin-213).

Notable Publications

Author	Pubmed ID	Journal	Application
Fei Yao	36163271	Inflamm Regen	WB, IF
Shuxiang Yu	34956479	Am J Transl Res	IF
Yi Li	35618676	ACS Appl Mater Interfaces	IF

Storage

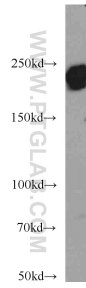
Storage:
Store at -20°C. Stable for one year after shipment.
Storage Buffer:
PBS with 0.02% sodium azide and 50% glycerol pH 7.3.
Aliquoting is unnecessary for -20°C storage

*** 20ul sizes contain 0.1% BSA

For technical support and original validation data for this product please contact:
T: 1 (888) 4PTGLAB (1-888-478-4522) (toll free in USA), or 1(312) 455-8498 (outside USA)
E: proteintech@ptglab.com
W: ptglab.com

This product is exclusively available under Proteintech Group brand and is not available to purchase from any other manufacturer.

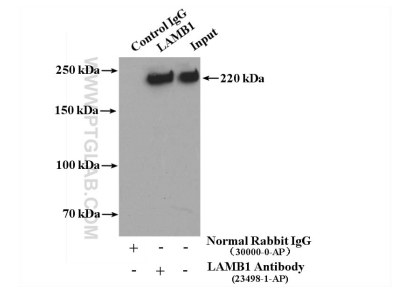
Selected Validation Data



NIH/3T3 cells were subjected to SDS PAGE followed by western blot with 23498-1-AP (LAMB1 antibody) at dilution of 1:1000 incubated at room temperature for 1.5 hours.



Immunofluorescent analysis of HepG2 cells, using LAMB1 antibody 23498-1-AP at 1:50 dilution and Rhodamine-labeled goat anti-rabbit IgG (red).



IP result of anti-Laminin beta 1 (IP:23498-1-AP, 4ug; Detection:23498-1-AP 1:1000) with NIH/3T3 cells lysate 2000ug.