

For Research Use Only

Mammaglobin A Polyclonal antibody, PBS Only

Catalog Number: 23501-1-PBS



Basic Information

Catalog Number:

23501-1-PBS

Size:

100ug, Concentration: 1mg/ml by
Nanodrop;

Source:

Rabbit

Isotype:

IgG

Immunogen Catalog Number:

AG20122

GenBank Accession Number:

BC067220

GeneID (NCBI):

4250

UNIPROT ID:

Q13296

Full Name:

secretoglobin, family 2A, member 2

Calculated MW:

120 aa, 13 kDa

Observed MW:

6-10 kDa

Purification Method:

Antigen affinity purification

Applications

Tested Applications:

WB, IHC, ELISA

Species Specificity:

human

Background Information

SCGB2A2, also known as mammaglobin A, is a member of the secretoglobin superfamily. It is a breast cancer-associated antigen almost exclusively over-expressed in primary and metastatic human breast cancers, making it a specific molecular marker and a potential therapeutic target for breast cancer. SCGB2A2 is a 93-amino acid protein with a calculated molecular weight of 10.5 kDa. This polyclonal antibody is raised against the C-terminal 71 amino acids of the protein encoded by a cDNA (MGC:71974; BC067220).

Storage

Storage:

Store at -80°C.

Storage Buffer:

PBS only, pH7.3

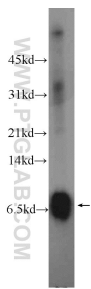
For technical support and original validation data for this product please contact:

T: 1 (888) 4PTGLAB (1-888-478-4522) (toll free
in USA), or 1(312) 455-8498 (outside USA)

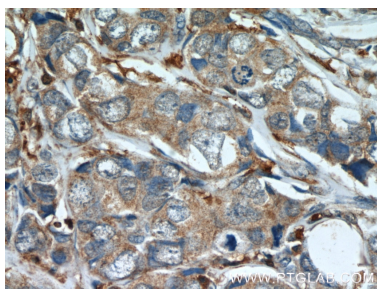
E: proteintech@ptglab.com
W: ptglab.com

This product is exclusively available under Proteintech Group brand and is not available to purchase from any other manufacturer.

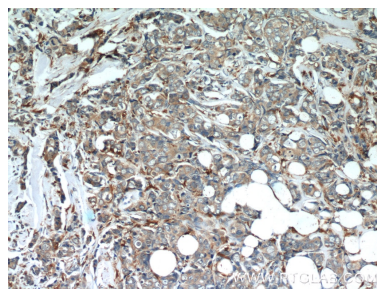
Selected Validation Data



MCF-7 cells were subjected to SDS PAGE followed by western blot with 23501-1-AP (Mammaglobin A antibody at dilution of 1:300 incubated at room temperature for 1.5 hours. This data was developed using the same antibody clone with 23501-1-PBS in a different storage buffer formulation.



Immunohistochemical analysis of paraffin-embedded human breast cancer slide using 23501-1-AP (Mammaglobin A antibody at dilution of 1:50. This data was developed using the same antibody clone with 23501-1-PBS in a different storage buffer formulation.



Immunohistochemical analysis of paraffin-embedded human breast cancer slide using 23501-1-AP (Mammaglobin A antibody at dilution of 1:50. This data was developed using the same antibody clone with 23501-1-PBS in a different storage buffer formulation.