

For Research Use Only

# ESCO2 Polyclonal antibody, PBS Only

Catalog Number: 23525-1-PBS



## Basic Information

**Catalog Number:**

23525-1-PBS

**Size:**

100ug, Concentration: 1 mg/ml by Nanodrop;

**Source:**

Rabbit

**Isotype:**

IgG

**Immunogen Catalog Number:**

AG18893

**GenBank Accession Number:**

BC146562

**GeneID (NCBI):**

157570

**UNIPROT ID:**

Q56NI9

**Full Name:**

establishment of cohesion 1 homolog 2 (S. cerevisiae)

**Calculated MW:**

601 aa, 68 kDa

**Observed MW:**

65-70 kDa

**Purification Method:**

Antigen Affinity purified

## Applications

**Tested Applications:**

WB, IHC, Indirect ELISA

**Species Specificity:**

human, mouse, rat

## Background Information

ESCO2 is also known as Establishment of Sister Chromatid Cohesion N-Acetyltransferase 2, EFO2. This gene encodes a member of the family of acetyltransferases involved in the establishment of sister chromatid cohesion during S phase and postreplicative sister chromatid cohesion induced by double-strand breaks (PubMed: 15821733). Mutations in the ESCO2 gene are associated with a rare genetic disorder called Roberts syndrome or SC phocomelia syndrome (PubMed: 16380922). The loss of function or impaired activity of the ESCO2 protein due to mutations disrupts the proper cohesion of sister chromatids, leading to chromosomal abnormalities and the characteristic features of Roberts syndrome. ESCO2 can be detected as about 65-70 kDa.

## Storage

**Storage:**

Store at -80°C.

**Storage Buffer:**

PBS Only

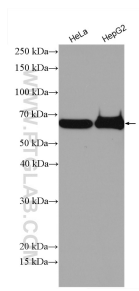
For technical support and original validation data for this product please contact:

T: 1 (888) 4PTGLAB (1-888-478-4522) (toll free in USA), or 1(312) 455-8498 (outside USA)

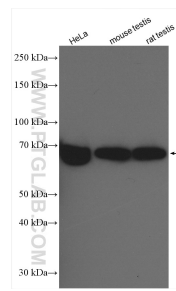
E: [proteintech@ptglab.com](mailto:proteintech@ptglab.com)  
W: [ptglab.com](http://ptglab.com)

**This product is exclusively available under Proteintech Group brand and is not available to purchase from any other manufacturer.**

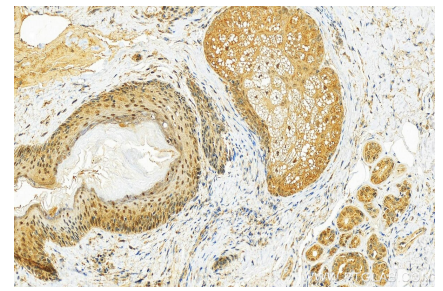
## Selected Validation Data



Various lysates were subjected to SDS PAGE followed by western blot with 23525-1-AP (ESCO2 antibody) at dilution of 1:2000 incubated at room temperature for 1.5 hours. This data was developed using the same antibody clone with 23525-1-PBS in a different storage buffer formulation.



Various lysates were subjected to SDS PAGE followed by western blot with 23525-1-AP (ESCO2 antibody) at dilution of 1:1500 incubated at room temperature for 1.5 hours. This data was developed using the same antibody clone with 23525-1-PBS in a different storage buffer formulation.



Immunohistochemical analysis of paraffin-embedded skin cancer slide using 23525-1-AP (ESCO2 antibody) at dilution of 1:300 (under 20x lens). Heat mediated antigen retrieval with Tris-EDTA buffer (pH 9.0). This data was developed using the same antibody clone with 23525-1-PBS in a different storage buffer formulation.