

For Research Use Only

# PCF11 Polyclonal antibody, PBS Only

Catalog Number: 23540-1-PBS

Featured Product

1 Publications



## Basic Information

**Catalog Number:**

23540-1-PBS

**Size:**

100ug, Concentration: 1 mg/ml by Nanodrop;

**Source:**

Rabbit

**Isotype:**

IgG

**Immunogen Catalog Number:**

AG20263

**GenBank Accession Number:**

BC146778

**GeneID (NCBI):**

51585

**UNIPROT ID:**

O94913

**Full Name:**

PCF11, cleavage and polyadenylation factor subunit, homolog (S. cerevisiae)

**Calculated MW:**

1555 aa, 173 kDa

**Observed MW:**

173 kDa

**Purification Method:**

Antigen Affinity purified

## Applications

**Tested Applications:**

WB, IHC, IP, Indirect ELISA

**Cited Applications:**

WB

**Species Specificity:**

human

**Cited Species:**

human

## Background Information

In *Saccharomyces cerevisiae*, the cleavage/polyadenylation factor Pcf11 is a crucial regulatory factor required for recruiting polyadenylation machinery to elongating RNA polymerase II (RNAPII), and is necessary for correct transcriptional termination. Pcf11 (PCF11, cleavage and polyadenylation factor subunit, homolog (*S. cerevisiae*)), is a 1,555 amino acid nuclear protein that is a component of pre-mRNA cleavage complex II. It is suggested that Pcf11 is capable of promoting the dissociation of Pol II elongation complexes from DNA. Pcf11 contains a CTD-interaction domain that binds in a phospho-dependent manner to the heptad repeats within the RNA polymerase II CTD. The gene encoding Pcf11 is located on human chromosome 11, which houses over 1,400 genes and comprises nearly 4% of the human genome. Jervell and Lange-Nielsen syndrome, Jacobsen syndrome, Niemann-Pick disease, hereditary angioedema and Smith-Lemli-Opitz syndrome are associated with defects in genes that maps to chromosome 11. This antibody is specific to the 173kd human PCF11 protein.

## Storage

**Storage:**

Store at -80°C.

**Storage Buffer:**

PBS only, pH7.3

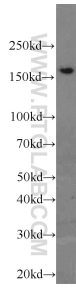
For technical support and original validation data for this product please contact:

T: 1 (888) 4PTGLAB (1-888-478-4522) (toll free in USA), or 1(312) 455-8498 (outside USA)

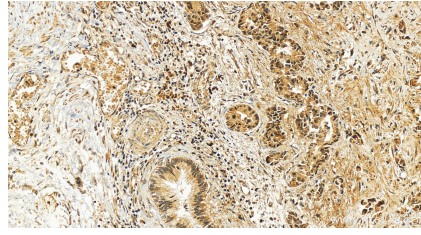
E: [proteintech@ptglab.com](mailto:proteintech@ptglab.com)  
W: [ptglab.com](http://ptglab.com)

This product is exclusively available under Proteintech Group brand and is not available to purchase from any other manufacturer.

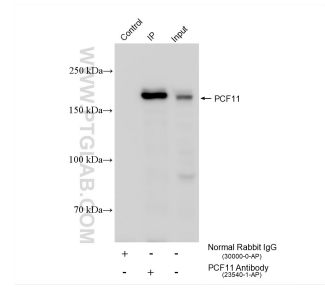
## Selected Validation Data



K-562 cells were subjected to SDS PAGE followed by western blot with 23540-1-AP (PCF11 antibody) at dilution of 1:1000 incubated at room temperature for 1.5 hours. This data was developed using the same antibody clone with 23540-1-PBS in a different storage buffer formulation.



Immunohistochemical analysis of paraffin-embedded human intrahepatic cholangiocarcinoma tissue slide using 23540-1-AP (PCF11 antibody) at dilution of 1:400 (under 20x lens). Heat mediated antigen retrieval with Tris-EDTA buffer (pH 9.0). This data was developed using the same antibody clone with 23540-1-PBS in a different storage buffer formulation.



IP result of anti-PCF11 (IP:23540-1-AP, 4ug; Detection:23540-1-AP 1:2000) with Jurkat cells lysate 1400 ug. This data was developed using the same antibody clone with 23540-1-PBS in a different storage buffer formulation.