

For Research Use Only

# SMTN Polyclonal antibody

Catalog Number: 23567-1-AP

5 Publications



## Basic Information

### Catalog Number:

23567-1-AP

### Size:

150ul, Concentration: 850 ug/ml by Nanodrop and 333 ug/ml by Bradford method using BSA as the standard;

### Source:

Rabbit

### Isotype:

IgG

### Immunogen Catalog Number:

AG19983

### GenBank Accession Number:

BC034237

### GeneID (NCBI):

6525

### UNIPROT ID:

P53814

### Full Name:

smoothelin

### Calculated MW:

940 aa, 102 kDa

### Observed MW:

117 kDa

### Purification Method:

Antigen Affinity purified

### Recommended Dilutions:

WB 1:500-1:1000

IHC 1:50-1:500

## Applications

### Tested Applications:

WB, IHC, ELISA

### Cited Applications:

WB, IHC

### Species Specificity:

mouse, human, rat

### Cited Species:

human, mouse

**Note-IHC: suggested antigen retrieval with TE buffer pH 9.0; (\*) Alternatively, antigen retrieval may be performed with citrate buffer pH 6.0**

### Positive Controls:

WB : COLO 320 cells,

IHC : human hysteresomyoma tissue,

## Background Information

SMTN, also named as Smoothelin, is a 917 amino acid protein, which contains 1 CH (calponin-homology) domain and belongs to the smoothelin family. SMTN as structural protein of the cytoskeleton involve in muscle organ development and smooth muscle contraction.

## Notable Publications

Author	Pubmed ID	Journal	Application
Nao Iguchi	31066574	Am J Physiol Renal Physiol	WB
Rohtem Aviram	39632420	FEBS J	WB,IHC
Rohtem Aviram	38464309	bioRxiv	WB,IHC

## Storage

### Storage:

Store at -20°C. Stable for one year after shipment.

### Storage Buffer:

PBS with 0.02% sodium azide and 50% glycerol pH 7.3.

Aliquoting is unnecessary for -20°C storage

\*\*\* 20ul sizes contain 0.1% BSA

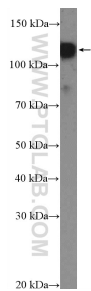
For technical support and original validation data for this product please contact:

T: 1 (888) 4PTGLAB (1-888-478-4522) (toll free in USA), or 1(312) 455-8498 (outside USA)

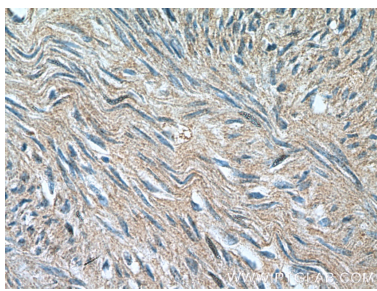
E: [proteintech@ptglab.com](mailto:proteintech@ptglab.com)  
W: [ptglab.com](http://ptglab.com)

This product is exclusively available under Proteintech Group brand and is not available to purchase from any other manufacturer.

## Selected Validation Data



COLO 320 cells were subjected to SDS PAGE followed by western blot with 23567-1-AP (SMTN Antibody) at dilution of 1:600 incubated at room temperature for 1.5 hours.



Immunohistochemical analysis of paraffin-embedded human hysteromyoma tissue slide using 23567-1-AP (SMTN Antibody) at dilution of 1:200 (under 40x lens).