

NFKB1,p105 Polyclonal antibody

Catalog Number: 23576-1-AP

2 Publications

Basic Information

Catalog Number: 23576-1-AP	GenBank Accession Number: BC051765	Purification Method: Antigen affinity purification
Size: 150ul , Concentration: 1200 µg/ml by Nanodrop and 540 µg/ml by Bradford method using BSA as the standard;	GeneID (NCBI): 4790	Recommended Dilutions: WB 1:500-1:2000 IHC 1:20-1:200 IF 1:20-1:200
Source: Rabbit	Full Name: nuclear factor of kappa light polypeptide gene enhancer in B-cells 1	
Isotype: IgG	Calculated MW: 105 kDa	
Immunogen Catalog Number: AG20297	Observed MW: 105 kDa	

Applications

Tested Applications: IF, IHC, WB, ELISA	Positive Controls:
Cited Applications: ChIP, WB	WB : SH-SY5Y cells, HeLa cells, Jurkat cells, K-562 cells, Raji cells
Species Specificity: human	IHC : human placenta tissue,
Cited Species: human	IF : SH-SY5Y cells,

Note-IHC: suggested antigen retrieval with TE buffer pH 9.0; (*) Alternatively, antigen retrieval may be performed with citrate buffer pH 6.0

Background Information

NFκB is a pleiotropic transcription factor which is present in almost all cell types and is involved in many biological processes such as inflammation, immunity, differentiation, cell growth, tumorigenesis and apoptosis. NFκB is activated by various intra- and extracellular stimuli such as cytokines, oxidant free radicals, ultraviolet irradiation, and bacterial or viral products. NFκB is a family of transcription factors that consists of homo- and heterodimers of NFκB1/p50 and RelA/p65 subunits, and controls a variety of cellular events including development and immune responses. All members share a conserved amino terminus domain that includes dimerization, nuclear localization, and DNA binding regions, and a carboxy terminal transactivation domain. Serines 529 and 536 in the transactivation domain of RelA/p65 are phosphorylated in response to several stimuli including phorbol ester, IL1 alpha and TNF alpha as mediated by IκB kinase and p38 MAPK. Phosphorylation of serines 529 and 536 is critical for RelA/p65 transcriptional activity. Activated NFκB translocates into the nucleus and stimulates the expression of genes involved in a wide variety of biological functions. Inappropriate activation of NFκB has been associated with a number of inflammatory diseases while persistent inhibition of NFκB leads to inappropriate immune cell development or delayed cell growth. NFκB1 appears to have dual functions such as cytoplasmic retention of attached NF-κappa-B proteins by p105 and generation of p50 by a cotranslational processing. This antibody can bind p105 isoforms of NFκB1.

Notable Publications

Author	Pubmed ID	Journal	Application
Meng Wang	31197610	In Vitro Cell Dev Biol Anim	ChIP
Dong Yang	29484114	Oncotarget	WB

Storage

Storage:
Store at -20°C. Stable for one year after shipment.
Storage Buffer:
PBS with 0.02% sodium azide and 50% glycerol pH 7.3.
Aliquoting is unnecessary for -20°C storage

*** 20ul sizes contain 0.1% BSA

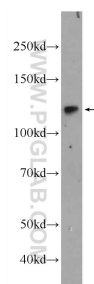
For technical support and original validation data for this product please contact:

T: 1 (888) 4PTGLAB (1-888-478-4522) (toll free in USA), or 1(312) 455-8498 (outside USA)

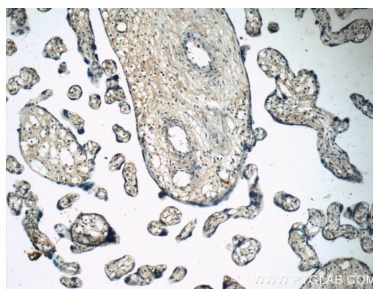
E: proteintech@ptglab.com
W: ptglab.com

This product is exclusively available under Proteintech Group brand and is not available to purchase from any other manufacturer.

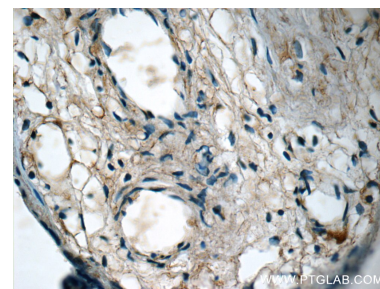
Selected Validation Data



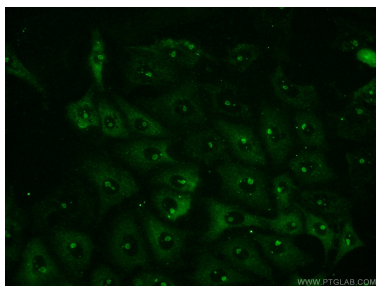
SH-SY5Y cells were subjected to SDS PAGE followed by western blot with 23576-1-AP (NFKB1,p105 Antibody) at dilution of 1:1000 incubated at room temperature for 1.5 hours.



Immunohistochemical analysis of paraffin-embedded human placenta slide using 23576-1-AP (NFKB1 Antibody) at dilution of 1:50 (under 10x lens).



Immunohistochemical analysis of paraffin-embedded human placenta slide using 23576-1-AP (NFKB1,p105 Antibody) at dilution of 1:50 (under 40x lens).



Immunofluorescent analysis of (-20°C Ethanol) fixed SH-SY5Y cells using 23576-1-AP (NFKB1,p105 antibody) at dilution of 1:50 and Alexa Fluor 488-conjugated AffiniPure Goat Anti-Rabbit IgG(H+L).