

For Research Use Only

RPS25 Polyclonal antibody

Catalog Number: 23599-1-AP **2 Publications**



Basic Information

| | | |
|--|--|---|
| Catalog Number: 23599-1-AP | GenBank Accession Number: BC004986 | Purification Method: Antigen affinity purification |
| Size: 150ul , Concentration: 600 µg/ml by Nanodrop and 447 µg/ml by Bradford method using BSA as the standard; | GeneID (NCBI): 6230 | Recommended Dilutions: WB 1:2000-1:10000 IHC 1:50-1:500 IF 1:20-1:200 |
| Source: Rabbit | Full Name: ribosomal protein S25 | |
| Isotype: IgG | Calculated MW: 14 kDa | |
| Immunogen Catalog Number: AG7890 | Observed MW: 15-17 kDa | |

Applications

| | |
|--|---|
| Tested Applications: IF, IHC, WB, ELISA | Positive Controls: WB : A549 cells, HeLa cells, K-562 cells, MCF-7 cells IHC : human breast cancer tissue, human liver tissue IF : MCF-7 cells, |
| Cited Applications: WB | |
| Species Specificity: human | |
| Cited Species: human | |
| Note-IHC: suggested antigen retrieval with TE buffer pH 9.0; (*) Alternatively, antigen retrieval may be performed with citrate buffer pH 6.0 | |

Background Information

Ribosomal protein S25 (RPS25) is a novel MDM2 interacting protein. It may be involved in viral replication of Dicrostoviridae and hepatitis C viruses. RPS25 is overexpressed in human leukemia cells exhibiting adriamycin resistance. It may have a role in p53-mediated apoptosis and cell-cycle arrest. The expected MW of RPS25 is about 15-17kDa. Catalog# 23599-1-AP is a rabbit polyclonal antibody raised against full-length RPS25, and is recommended for ELISA, Western blotting.

Notable Publications

| Author | Pubmed ID | Journal | Application |
|-----------------|-----------|---------------------|-------------|
| Chiung-Hung Hsu | 27161446 | Mol Cell Proteomics | WB |
| Yuhe Jiang | 38047915 | ACS Nano | WB |

Storage

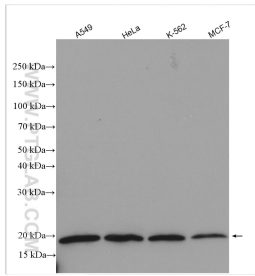
Storage:
Store at -20°C. Stable for one year after shipment.
Storage Buffer:
PBS with 0.02% sodium azide and 50% glycerol pH 7.3.
Aliquoting is unnecessary for -20°C storage

*** 20ul sizes contain 0.1% BSA

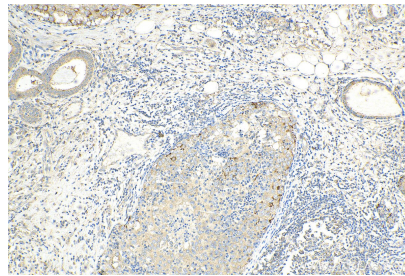
For technical support and original validation data for this product please contact:
T: 1 (888) 4PTGLAB (1-888-478-4522) (toll free in USA), or 1(312) 455-8498 (outside USA)
E: proteintech@ptglab.com
W: ptglab.com

This product is exclusively available under Proteintech Group brand and is not available to purchase from any other manufacturer.

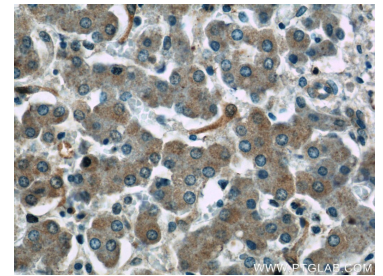
Selected Validation Data



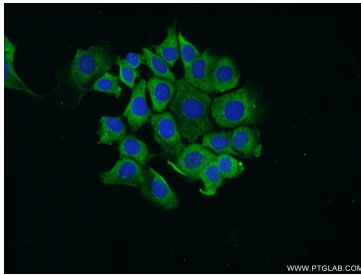
Various lysates were subjected to SDS PAGE followed by western blot with 23599-1-AP (RPS25 antibody) at dilution of 1:5000 incubated at room temperature for 1.5 hours.



Immunohistochemical analysis of paraffin-embedded human breast cancer tissue slide using 23599-1-AP (RPS25 antibody) at dilution of 1:200 (under 10x lens). Heat mediated antigen retrieval with Tris-EDTA buffer (pH 9.0).



Immunohistochemical analysis of paraffin-embedded human liver slide using 23599-1-AP (RPS25 Antibody) at dilution of 1:50.



Immunofluorescent analysis of MCF-7 cells using 23599-1-AP (RPS25 antibody) at dilution of 1:50 and Alexa Fluor 488-conjugated AffiniPure Goat Anti-Rabbit IgG(H+L).