

For Research Use Only

# MSL2 Polyclonal antibody

Catalog Number: 23601-1-AP



## Basic Information

**Catalog Number:**

23601-1-AP

**Size:**

150ul, Concentration: 450 ug/ml by Nanodrop;

**Source:**

Rabbit

**Isotype:**

IgG

**Immunogen Catalog Number:**

AG18727

**GenBank Accession Number:**

BC093790

**GeneID (NCBI):**

55167

**UNIPROT ID:**

Q9HCI7

**Full Name:**

male-specific lethal 2 homolog (Drosophila)

**Calculated MW:**

577 aa, 63 kDa

**Observed MW:**

70-75 kDa

**Purification Method:**

Antigen Affinity purified

**Recommended Dilutions:**

WB: 1:1000-1:4000

IF/ICC: 1:200-1:800

## Applications

**Tested Applications:**

WB, ELISA

**Species Specificity:**

human

**Positive Controls:**

WB : Jurkat cells, MOLT-4 cells

IF/ICC : A431 cells,

## Background Information

In mammals, MSL2 participates in histone H2B ubiquitination (H2Bub1) via the MSL complex, regulating transcription and chromatin remodeling. It is essential for embryonic development and has been implicated in cancer progression. MSL2's dysfunction is linked to developmental defects and oncogenesis, highlighting its critical role in gene regulation. (PMID: 30669413; PMID: 34899909)

## Storage

**Storage:**

Store at -20°C. Stable for one year after shipment.

**Storage Buffer:**

PBS with 0.02% sodium azide and 50% glycerol, pH7.3

Aliquoting is unnecessary for -20°C storage

\*\*\* 20ul sizes contain 0.1% BSA

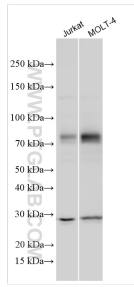
For technical support and original validation data for this product please contact:

T: 1 (888) 4PTGLAB (1-888-478-4522) (toll free in USA), or 1(312) 455-8498 (outside USA)

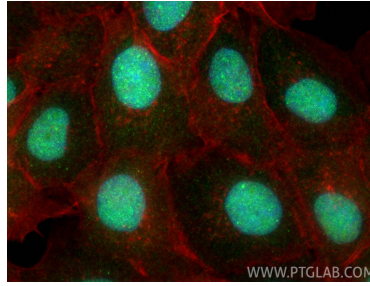
E: [proteintech@ptglab.com](mailto:proteintech@ptglab.com)  
W: [ptglab.com](http://ptglab.com)

This product is exclusively available under Proteintech Group brand and is not available to purchase from any other manufacturer.

## Selected Validation Data



Various lysates were subjected to SDS PAGE followed by western blot with 23601-1-AP (MSL2 antibody) at dilution of 1:2000 incubated at room temperature for 1.5 hours.



Immunofluorescent analysis of (4% PFA) fixed A431 cells using MSL2 antibody (23601-1-AP) at dilution of 1:400 and CoraLite®488-Conjugated Goat Anti-Rabbit IgG(H+L) (SA00013-2), CL594-phalloidin (red).