

For Research Use Only

MSL2 Polyclonal antibody, PBS Only

Catalog Number: 23601-1-PBS



Basic Information

Catalog Number:

23601-1-PBS

Size:

100ug, Concentration: 1 mg/ml by Nanodrop;

Source:

Rabbit

Isotype:

IgG

Immunogen Catalog Number:

AG18727

GenBank Accession Number:

BC093790

GeneID (NCBI):

55167

UNIPROT ID:

Q9HCI7

Full Name:

male-specific lethal 2 homolog (Drosophila)

Calculated MW:

577 aa, 63 kDa

Observed MW:

70-75 kDa

Purification Method:

Antigen Affinity purified

Applications

Tested Applications:

WB, Indirect ELISA

Species Specificity:

human

Background Information

In mammals, MSL2 participates in histone H2B ubiquitination (H2Bub1) via the MSL complex, regulating transcription and chromatin remodeling. It is essential for embryonic development and has been implicated in cancer progression. MSL2's dysfunction is linked to developmental defects and oncogenesis, highlighting its critical role in gene regulation. (PMID: 30669413; PMID: 34899909)

Storage

Storage:

Store at -80°C.

Storage Buffer:

PBS only, pH7.3

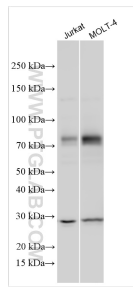
For technical support and original validation data for this product please contact:

T: 1 (888) 4PTGLAB (1-888-478-4522) (toll free in USA), or 1(312) 455-8498 (outside USA)

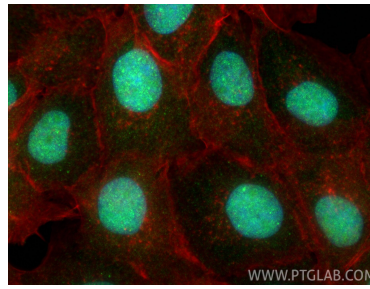
E: proteintech@ptglab.com
W: ptglab.com

This product is exclusively available under Proteintech Group brand and is not available to purchase from any other manufacturer.

Selected Validation Data



Various lysates were subjected to SDS PAGE followed by western blot with 23601-1-AP (MSL2 antibody) at dilution of 1:2000 incubated at room temperature for 1.5 hours. This data was developed using the same antibody clone with 23601-1-PBS in a different storage buffer formulation.



Immunofluorescent analysis of (4% PFA) fixed A431 cells using MSL2 antibody (23601-1-AP) at dilution of 1:400 and CoraLite®488-Conjugated Goat Anti-Rabbit IgG(H+L) (SA00013-2), CL594-phalloidin (red). This data was developed using the same antibody clone with 23601-1-PBS in a different storage buffer formulation.