

For Research Use Only

TIMMDC1 Polyclonal antibody

Catalog Number: 23622-1-AP

1 Publications



Basic Information

Catalog Number:

23622-1-AP

Size:

150ul , Concentration: 600 ug/ml by Nanodrop and 400 ug/ml by Bradford method using BSA as the standard;

Source:

Rabbit

Isotype:

IgG

Immunogen Catalog Number:

AG20017

GenBank Accession Number:

BC012341

GeneID (NCBI):

51300

UNIPROT ID:

Q9NPL8

Full Name:

chromosome 3 open reading frame 1

Calculated MW:

285 aa, 32 kDa

Observed MW:

32-35 kDa

Purification Method:

Antigen Affinity purified

Recommended Dilutions:

WB 1:500-1:2000

Applications

Tested Applications:

WB, ELISA

Cited Applications:

WB

Species Specificity:

human

Cited Species:

human

Positive Controls:

WB : A375 cells,

Notable Publications

Author	Pubmed ID	Journal	Application
Bruna Rodrigues Muys	31101765	Cancer Res	WB

Storage

Storage:

Store at -20°C. Stable for one year after shipment.

Storage Buffer:

PBS with 0.02% sodium azide and 50% glycerol pH 7.3.

Aliquoting is unnecessary for -20°C storage

*** 20ul sizes contain 0.1% BSA

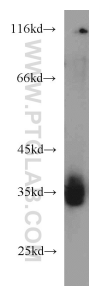
For technical support and original validation data for this product please contact:

T: 1 (888) 4PTGLAB (1-888-478-4522) (toll free in USA), or 1(312) 455-8498 (outside USA)

E: proteintech@ptglab.com
W: ptglab.com

This product is exclusively available under Proteintech Group brand and is not available to purchase from any other manufacturer.

Selected Validation Data



A375 cells were subjected to SDS PAGE followed by western blot with 23622-1-AP (TIMMDC1 antibody) at dilution of 1:1000 incubated at room temperature for 1.5 hours.