

For Research Use Only

SFMBT1 Polyclonal antibody

Catalog Number: 23631-1-AP



Basic Information

| | | |
|---|---|--|
| Catalog Number: 23631-1-AP | GenBank Accession Number: BC014614 | Purification Method: Antigen Affinity purified |
| Size: 150ul , Concentration: 450 ug/ml by Nanodrop; | GeneID (NCBI): 51460 | Recommended Dilutions: WB: 1:1000-1:6000 |
| Source: Rabbit | UNIPROT ID: Q9UHI3 | |
| Isotype: IgG | Full Name: Scm-like with four mbt domains 1 | |
| Immunogen Catalog Number: AG20417 | Calculated MW: 866 aa, 98 kDa | |
| | Observed MW: 93-98 kDa | |

Applications

| | |
|--|--|
| Tested Applications: WB, ELISA | Positive Controls: WB : IMR-32 cells, mouse testis tissue, rat testis tissue |
| Species Specificity: human, mouse, rat | |

Background Information

Scm-like with four MBT domains protein 1 (SFMBT1) is also named as Renal ubiquitous protein 1 (RU1). SFMBT1 is a transcriptional repressor that associates with chromatin and interacts with the N-terminal tail of histone H3 (PMID: 17599839). SFMBT1 forms a complex with Lys-specific demethylase 1 (LSD1) and they are believed to act together in combination with RNA polymerase II in the transcriptional regulation of histone genes (PMID: 23592795). SFMBT1 is up-regulated in CRC tumor tissues and cells and may be associated with drug resistance (PMID: 35577773). SFMBT1 regulates the expression and interacts with key genes involved in heart muscle and artery development (PWHP2A, as well as myogenic differentiation (MYOD, SIX2) (PMID: 35483874). Testes, endocrine glands, and blood are tissues that highly express SFMBT1 (PMID: 25613900). SFMBT1 is also highly expressed in skeletal muscles specifically in undifferentiated myoblasts, and this expression starts diminishing during muscle differentiation (PMID: 23349461).

Storage

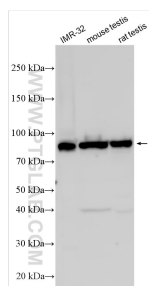
Storage:
Store at -20°C. Stable for one year after shipment.
Storage Buffer:
PBS with 0.02% sodium azide and 50% glycerol, pH7.3
Aliquoting is unnecessary for -20°C storage

*** 20ul sizes contain 0.1% BSA

For technical support and original validation data for this product please contact:
T: 1 (888) 4PTGLAB (1-888-478-4522) (toll free in USA), or 1(312) 455-8498 (outside USA)
E: proteintech@ptglab.com
W: ptglab.com

This product is exclusively available under Proteintech Group brand and is not available to purchase from any other manufacturer.

Selected Validation Data



Various lysates were subjected to SDS PAGE followed by western blot with 23631-1-AP (SFMBT1 antibody) at dilution of 1:3000 incubated at room temperature for 1.5 hours.