

For Research Use Only

# SFMBT1 Polyclonal antibody, PBS Only

Catalog Number: 23631-1-PBS



## Basic Information

<b>Catalog Number:</b> 23631-1-PBS	<b>GenBank Accession Number:</b> BC014614	<b>Purification Method:</b> Antigen Affinity purified
<b>Size:</b> 100ug, Concentration: 1 mg/ml by Nanodrop;	<b>GeneID (NCBI):</b> 51460	
<b>Source:</b> Rabbit	<b>UNIPROT ID:</b> Q9UHI3	
<b>Isotype:</b> IgG	<b>Full Name:</b> Scm-like with four mbt domains 1	
<b>Immunogen Catalog Number:</b> AG20417	<b>Calculated MW:</b> 866 aa, 98 kDa	
	<b>Observed MW:</b> 93-98 kDa	

## Applications

**Tested Applications:**  
WB, Indirect ELISA

**Species Specificity:**  
human, mouse, rat

## Background Information

Scm-like with four MBT domains protein 1 (SFMBT1) is also named as Renal ubiquitous protein 1 (RU1). SFMBT1 is a transcriptional repressor that associates with chromatin and interacts with the N-terminal tail of histone H3 (PMID: 17599839). SFMBT1 forms a complex with Lys-specific demethylase 1 (LSD1) and they are believed to act together in combination with RNA polymerase II in the transcriptional regulation of histone genes (PMID: 23592795). SFMBT1 is up-regulated in CRC tumor tissues and cells and may be associated with drug resistance (PMID: 35577773). SFMBT1 regulates the expression and interacts with key genes involved in heart muscle and artery development (PWWP2A, as well as myogenic differentiation (MYOD, SIX2) (PMID: 35483874). Testes, endocrine glands, and blood are tissues that highly express SFMBT1 (PMID: 25613900). SFMBT1 is also highly expressed in skeletal muscles specifically in undifferentiated myoblasts, and this expression starts diminishing during muscle differentiation (PMID: 23349461).

## Storage

**Storage:**  
Store at -80°C.

**Storage Buffer:**  
PBS only, pH7.3

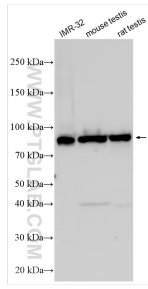
For technical support and original validation data for this product please contact:

T: 1 (888) 4PTGLAB (1-888-478-4522) (toll free in USA), or 1(312) 455-8498 (outside USA)

E: [proteintech@ptglab.com](mailto:proteintech@ptglab.com)  
W: [ptglab.com](http://ptglab.com)

**This product is exclusively available under Proteintech Group brand and is not available to purchase from any other manufacturer.**

## Selected Validation Data



Various lysates were subjected to SDS PAGE followed by western blot with 23631-1-AP (SFMBT1 antibody) at dilution of 1:3000 incubated at room temperature for 1.5 hours. This data was developed using the same antibody clone with 23631-1-PBS in a different storage buffer formulation.