

For Research Use Only

P15RS Polyclonal antibody

Catalog Number: 23652-1-AP

Featured Product

4 Publications



Basic Information

Catalog Number:

23652-1-AP

Size:

150ul, Concentration: 800 ug/ml by Nanodrop;

Source:

Rabbit

Isotype:

IgG

Immunogen Catalog Number:

AG20409

GenBank Accession Number:

BC010136

GeneID (NCBI):

55197

UNIPROT ID:

Q96P16

Full Name:

regulation of nuclear pre-mRNA domain containing 1A

Calculated MW:

312 aa, 36 kDa

Observed MW:

36 kDa

Purification Method:

Antigen affinity purification

Recommended Dilutions:

WB 1:1000-1:6000

IF/ICC 1:50-1:500

Applications

Tested Applications:

WB, IF/ICC, ELISA

Cited Applications:

WB, IHC, IP, IF

Species Specificity:

human, mouse

Cited Species:

human, mouse

Positive Controls:

WB: A431 cells, mouse liver tissue, mouse skeletal muscle tissue, L02 cells, Jurkat cells, HEK-293 cells

IF/ICC: HeLa cells, HepG2 cells

Background Information

RPRD1A is upregulated in cells overexpressing cyclin-dependent kinase inhibitor p15(INK4b) and may have a role in cell cycle regulation. It contains a RAR domain that is involved in regulation of nuclear pre-mRNA, which suggests that P15RS may act as a nuclear regulation protein [PMID:12470661]. It also interacts with phosphorylated C-terminal heptapeptide repeat domain (CTD) of the largest RNA polymerase II subunit POLR2A, and participates in dephosphorylation of the CTD. Besides, RPRD1A regulates cell cycle genes and attenuates WNT signaling [PMID: 20739273], and acts as a negative regulator of cyclin-D1 (CCND1) and cyclin-E (CCNE1) in the cell cycle [PMID: 22231121].

Notable Publications

| Author | Pubmed ID | Journal | Application |
|---------------|-----------|----------------|-----------------|
| Xiaoman Chen | 30207732 | Mol Pharm | WB |
| Simona Cugusi | 36121223 | Mol Cell Biol | WB |
| Xiaofan Feng | 34921137 | Cell Death Dis | IP, WB, IHC, IF |

Storage

Storage:

Store at -20°C. Stable for one year after shipment.

Storage Buffer:

PBS with 0.02% sodium azide and 50% glycerol pH 7.3.

Aliquoting is unnecessary for -20°C storage

*** 20ul sizes contain 0.1% BSA

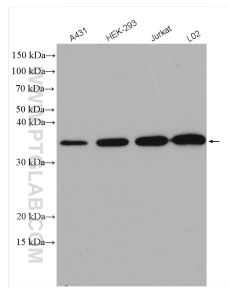
For technical support and original validation data for this product please contact:

T: 1 (888) 4PTGLAB (1-888-478-4522) (toll free in USA), or 1(312) 455-8498 (outside USA)

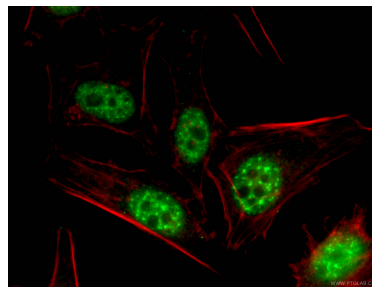
E: proteintech@ptglab.com
W: ptglab.com

This product is exclusively available under Proteintech Group brand and is not available to purchase from any other manufacturer.

Selected Validation Data



Various lysates were subjected to SDS PAGE followed by western blot with 23652-1-AP (P15RS antibody) at dilution of 1:3000 incubated at room temperature for 1.5 hours.



Immunofluorescent analysis of (4% PFA) fixed HeLa cells using 23652-1-AP (P15RS antibody), at dilution of 1:200 and CoraLite®488-Conjugated AffiniPure Goat Anti-Rabbit IgG(H+L).