

For Research Use Only

Alpha Actin Polyclonal antibody

Catalog Number: 23660-1-AP **54 Publications**



Basic Information

Catalog Number: 23660-1-AP	GenBank Accession Number: BC012597	Purification Method: Antigen Affinity purified
Size: 150ul , Concentration: 600 µg/ml by Nanodrop and 220 µg/ml by Bradford method using BSA as the standard;	GeneID (NCBI): 58	Recommended Dilutions: WB 1:1000-1:8000 IP 0.5-4.0 ug for IP and 1:1000-1:8000 for WB
Source: Rabbit	Full Name: actin, alpha 1, skeletal muscle	IHC 1:50-1:200
Isotype: IgG	Calculated MW: 42 kDa	IF 1:20-1:200
Immunogen Catalog Number: AG19151	Observed MW: 40-42 kDa	

Applications

Tested Applications: FC, IF, IHC, IP, WB, ELISA	Positive Controls: WB : rat skeletal muscle tissue, mouse skeletal muscle tissue IP : mouse skeletal muscle tissue, IHC : human colon tissue, human heart tissue, human skeletal muscle tissue IF : HepG2 cells,
Cited Applications: FC, IF, IHC, WB	
Species Specificity: human, mouse, rat	
Cited Species: human, mouse, rat	
Note-IHC: suggested antigen retrieval with TE buffer pH 9.0; (*) Alternatively, antigen retrieval may be performed with citrate buffer pH 6.0	

Background Information

Notable Publications

Author	Pubmed ID	Journal	Application
Xu-Hong Fu	30224636	Acta Pharmacol Sin	WB
Ying Lin	32973959	Oncol Lett	WB
XiaoLin Sun	32963547	Stem Cells Int	FC,IF

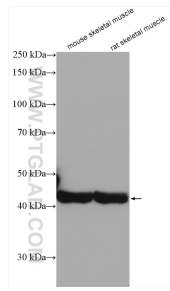
Storage

Storage:
Store at -20°C. Stable for one year after shipment.
Storage Buffer:
PBS with 0.02% sodium azide and 50% glycerol pH 7.3.
Aliquoting is unnecessary for -20°C storage

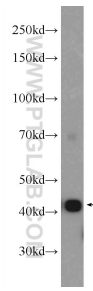
For technical support and original validation data for this product please contact:
T: 1 (888) 4PTGLAB (1-888-478-4522) (toll free in USA), or 1(312) 455-8498 (outside USA)
E: proteintech@ptglab.com
W: ptglab.com

This product is exclusively available under Proteintech Group brand and is not available to purchase from any other manufacturer.

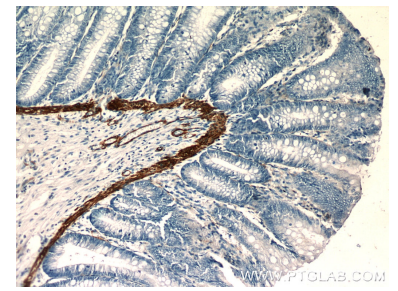
Selected Validation Data



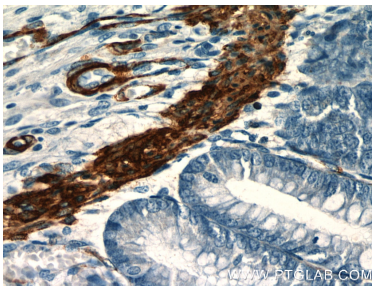
Various lysates were subjected to SDS PAGE followed by western blot with 23660-1-AP (alpha Actin antibody) at dilution of 1:150000 incubated at room temperature for 1.5 hours.



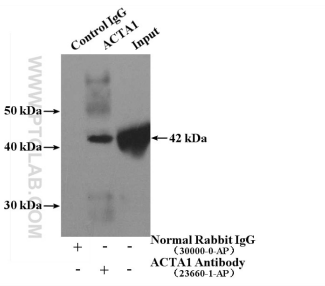
rat skeletal muscle tissue were subjected to SDS PAGE followed by western blot with 23660-1-AP (alpha Actin antibody at dilution of 1:4000 incubated at room temperature for 1.5 hours.



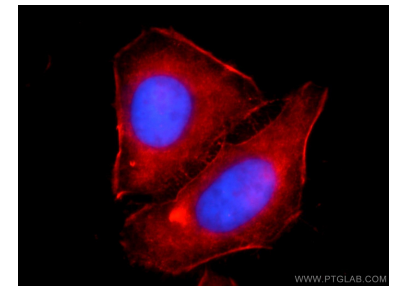
Immunohistochemical analysis of paraffin-embedded human colon slide using 23660-1-AP (alpha Actin antibody at dilution of 1:50.



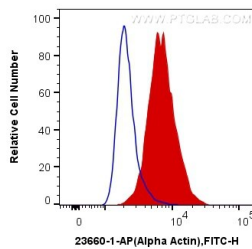
Immunohistochemical analysis of paraffin-embedded human colon slide using 23660-1-AP (alpha Actin antibody at dilution of 1:50.



IP Result of anti-alpha Actin (IP:23660-1-AP, 4ug; Detection:23660-1-AP 1:4000) with mouse skeletal muscle tissue lysate 2200ug.



Immunofluorescent analysis of HepG2 cells using 23660-1-AP (alpha Actin antibody) at dilution of 1:50 and Rhodamine-Goat anti-Rabbit IgG.



1X10⁶ C2C12 cells were intracellularly stained with 0.4 ug Anti-Human Alpha Actin (23660-1-AP) and CoraLite@488-Conjugated AffiniPure Goat Anti-Rabbit IgG(H+L) at dilution 1:1000 (red), or 0.4 ug Control Antibody. Cells were fixed with 4% PFA and permeabilized with Flow Cytometry Perm Buffer (PF00011-C).