

For Research Use Only

# TMEM231 Polyclonal antibody

Catalog Number: 23731-1-AP



## Basic Information

<b>Catalog Number:</b> 23731-1-AP	<b>GenBank Accession Number:</b> BC010609	<b>Purification Method:</b> Antigen affinity purification
<b>Size:</b> 150ul , Concentration: 200 ug/ml by Nanodrop and 133 ug/ml by Bradford method using BSA as the standard;	<b>GeneID (NCBI):</b> 79583	<b>Recommended Dilutions:</b> IHC 1:20-1:200
<b>Source:</b> Rabbit	<b>UNIPROT ID:</b> Q9H6L2	<b>IF/ICC 1:200-1:800</b>
<b>Isotype:</b> IgG	<b>Full Name:</b> hypothetical protein FLJ22167	
<b>Immunogen Catalog Number:</b> AG20669	<b>Calculated MW:</b> 345 aa, 39 kDa	

## Applications

<b>Tested Applications:</b> IHC, IF/ICC, ELISA	<b>Positive Controls:</b>
<b>Species Specificity:</b> human, canine	<b>IHC :</b> human pancreas tissue,
<b>Note-IHC: suggested antigen retrieval with TE buffer pH 9.0; (*) Alternatively, antigen retrieval may be performed with citrate buffer pH 6.0</b>	<b>IF/ICC :</b> MDCK cells,

## Background Information

Transmembrane protein 231 (TMEM231) encodes a 36 kDa two-pass transmembrane protein that is part of the B9 complex and localizes to the base of the ciliary axoneme at the TZ. TMEM231 was first identified as a causative gene for MKS and participates in the formation of the diffusion barrier between the cilia and plasma membrane (PMID: 34912761, 37736303). Tmem231 mutant mice have developmental defects reminiscent of MKS patients, including corticomedullary kidney cysts, polydactyly and hepatic ductal plate malformation (PMID: 25869670).

## Storage

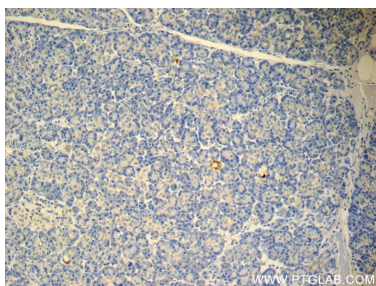
**Storage:**  
Store at -20°C. Stable for one year after shipment.  
**Storage Buffer:**  
PBS with 0.02% sodium azide and 50% glycerol pH 7.3.  
**Aliquoting is unnecessary for -20°C storage**

\*\*\* 20ul sizes contain 0.1% BSA

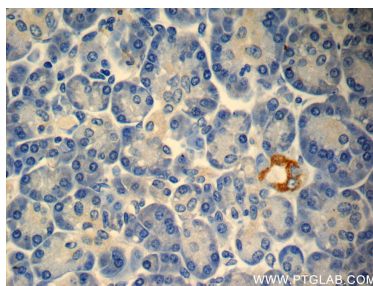
For technical support and original validation data for this product please contact:  
T: 1 (888) 4PTGLAB (1-888-478-4522) (toll free in USA), or 1(312) 455-8498 (outside USA)  
E: proteintech@ptglab.com  
W: ptglab.com

This product is exclusively available under Proteintech Group brand and is not available to purchase from any other manufacturer.

## Selected Validation Data



Immunohistochemical analysis of paraffin-embedded human pancreas slide using 23731-1-AP (TMEM231 Antibody) at dilution of 1:50. (under 10x lens).



Immunohistochemical analysis of paraffin-embedded human pancreas slide using 23731-1-AP (TMEM231 Antibody) at dilution of 1:50. (under 40x lens).



Immunofluorescent analysis of (4% PFA) fixed MDCK cells using TMEM231 antibody (23731-1-AP) at dilution of 1:400 and CoraLite®488-Conjugated Goat Anti-Rabbit IgG(H+L).