

For Research Use Only

C20orf112 Polyclonal antibody

Catalog Number: 23746-1-AP



Basic Information

Catalog Number: 23746-1-AP	GenBank Accession Number: BC065370	Purification Method: Antigen Affinity purified
Size: 150ul , Concentration: 350 ug/ml by Nanodrop and 167 ug/ml by Bradford method using BSA as the standard;	GeneID (NCBI): 140688	Recommended Dilutions: WB 1:500-1:2000 IHC 1:50-1:500
Source: Rabbit	UNIPROT ID: Q96MY1	
Isotype: IgG	Full Name: chromosome 20 open reading frame 112	
Immunogen Catalog Number: AG20690	Calculated MW: 436 aa, 47 kDa	
	Observed MW: 43 kDa	

Applications

Tested Applications: WB, IHC, ELISA	Positive Controls:
Species Specificity: human, mouse	WB : mouse brain tissue,
Note-IHC: suggested antigen retrieval with TE buffer pH 9.0; (*) Alternatively, antigen retrieval may be performed with citrate buffer pH 6.0	IHC : human ovary cancer tissue,

Background Information

C20orf112, also termed as chromosome 20 open reading frame 112, is a 436 amino acid protein, which consists of a relatively hydrophobic N terminal region and two putative small coiled-coil domains. C20orf112 may likely involve in endocytosis pathway and normal brain development. It also is required to mediate the cell energy response. The function of C20orf112 is still non-known and mechanism is required to further study.

Storage

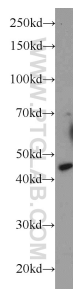
Storage:
Store at -20°C. Stable for one year after shipment.
Storage Buffer:
PBS with 0.02% sodium azide and 50% glycerol pH 7.3.
Aliquoting is unnecessary for -20°C storage

*** 20ul sizes contain 0.1% BSA

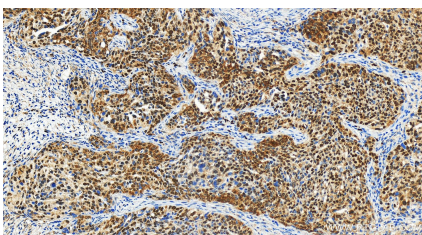
For technical support and original validation data for this product please contact:
T: 1 (888) 4PTGLAB (1-888-478-4522) (toll free in USA), or 1(312) 455-8498 (outside USA)
E: proteintech@ptglab.com
W: ptglab.com

This product is exclusively available under Proteintech Group brand and is not available to purchase from any other manufacturer.

Selected Validation Data



mouse brain tissue were subjected to SDS PAGE followed by western blot with 23746-1-AP (C20orf112 antibody) at dilution of 1:1000 incubated at room temperature for 1.5 hours.



Immunohistochemical analysis of paraffin-embedded human ovary cancer tissue slide using 23746-1-AP (C20orf112 antibody) at dilution of 1:200 (under 20x lens). Heat mediated antigen retrieval with Tris-EDTA buffer (pH 9.0).