

For Research Use Only

TPCN1 Polyclonal antibody

Catalog Number: 23758-1-AP

Featured Product

1 Publications



Basic Information

Catalog Number:

23758-1-AP

Size:

150ul, Concentration: 650 µg/ml by Nanodrop;

Source:

Rabbit

Isotype:

IgG

Immunogen Catalog Number:

AG20607

GenBank Accession Number:

BC136795

GeneID (NCBI):

53373

UNIPROT ID:

Q9ULQ1

Full Name:

two pore segment channel 1

Calculated MW:

816 aa, 94 kDa

Observed MW:

94 kDa

Purification Method:

Antigen Affinity purified

Recommended Dilutions:

WB 1:200-1:1000

IHC 1:50-1:500

IF 1:10-1:100

Applications

Tested Applications:

WB, IF, IHC, ELISA

Cited Applications:

WB

Species Specificity:

human, mouse

Cited Species:

mouse

Note-IHC: suggested antigen retrieval with TE buffer pH 9.0; (*) Alternatively, antigen retrieval may be performed with citrate buffer pH 6.0

Positive Controls:

WB : mouse heart tissue,

IHC : human kidney tissue,

IF : HepG2 cells,

Notable Publications

Author	Pubmed ID	Journal	Application
Yayu Wang	34910516	Sci Adv	WB

Storage

Storage:

Store at -20°C. Stable for one year after shipment.

Storage Buffer:

PBS with 0.02% sodium azide and 50% glycerol pH 7.3.

Aliquoting is unnecessary for -20°C storage

*** 20ul sizes contain 0.1% BSA

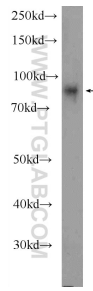
For technical support and original validation data for this product please contact:

T: 1 (888) 4PTGLAB (1-888-478-4522) (toll free in USA), or 1(312) 455-8498 (outside USA)

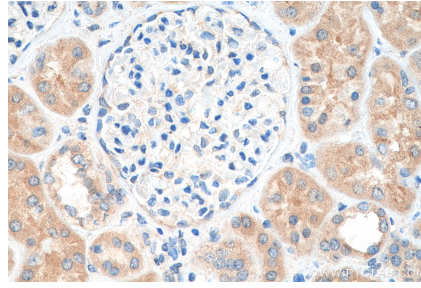
E: proteintech@ptglab.com
W: ptglab.com

This product is exclusively available under Proteintech Group brand and is not available to purchase from any other manufacturer.

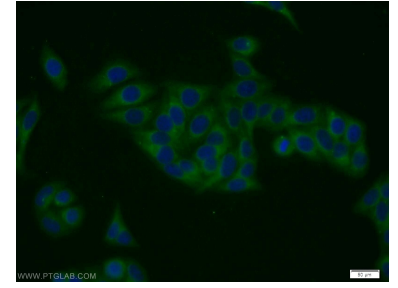
Selected Validation Data



mouse heart tissue were subjected to SDS PAGE followed by western blot with 23758-1-AP (TPCN1 Antibody) at dilution of 1:300 incubated at room temperature for 1.5 hours.



Immunohistochemical analysis of paraffin-embedded human kidney tissue slide using 23758-1-AP (TPCN1 antibody) at dilution of 1:100 (under 40x lens). Heat mediated antigen retrieval with Tris-EDTA buffer (pH 9.0).



Immunofluorescent analysis of HepG2 cells using 23758-1-AP (TPCN1 antibody) at dilution of 1:25 and Alexa Fluor 488-conjugated AffiniPure Goat Anti-Rabbit IgG(H+L).