

For Research Use Only

RSK2 Polyclonal antibody, PBS Only

Catalog Number: 23762-1-PBS

Featured Product



Basic Information

Catalog Number:

23762-1-PBS

Size:

100ug, Concentration: 1 mg/ml by Nanodrop;

Source:

Rabbit

Isotype:

IgG

Immunogen Catalog Number:

AG20620

GenBank Accession Number:

BC096301

GeneID (NCBI):

6197

UNIPROT ID:

P51812

Full Name:

ribosomal protein S6 kinase, 90kDa, polypeptide 3

Calculated MW:

740 aa, 84 kDa

Observed MW:

84 kDa

Purification Method:

Antigen affinity purification

Applications

Tested Applications:

WB, IHC, IF/ICC, IF-P, IP, Indirect ELISA

Species Specificity:

human, mouse

Background Information

RPS6KA3 (Ribosomal protein S6 kinase alpha-3) is also named as ISPK1, MAPKAPK1B, RSK2 and belongs to the protein kinase superfamily. It localizes at the kinetochores under spindle checkpoint conditions, and during mitosis, associated with the centrosomes, the spindle and at the mid-body (PMID:20383198). It is required for EGF activated phosphorylation of histone H3, which may cause chromatin remodeling and facilitate gene transcription and maybe playing an essential regulatory role in protein synthesis during cell proliferation.

Storage

Storage:

Store at -80°C.

Storage Buffer:

PBS only, pH7.3

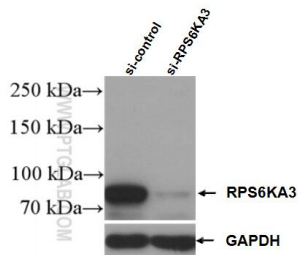
For technical support and original validation data for this product please contact:

T: 1 (888) 4PTGLAB (1-888-478-4522) (toll free in USA), or 1(312) 455-8498 (outside USA)

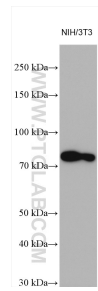
E: proteintech@ptglab.com
W: ptglab.com

This product is exclusively available under Proteintech Group brand and is not available to purchase from any other manufacturer.

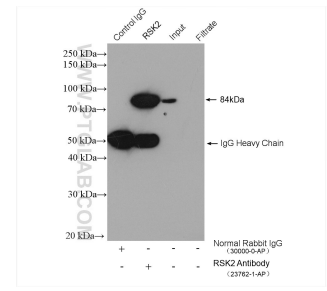
Selected Validation Data



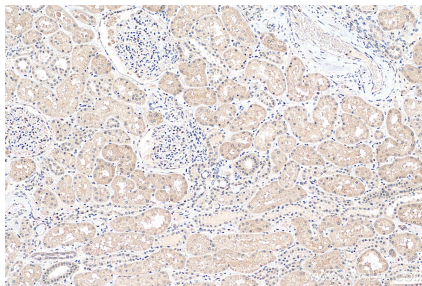
WB result of RSK2 antibody (23762-1-AP; 1:2000; incubated at room temperature for 1.5 hours) with sh-Control and sh-RSK2 transfected K-562 cells. This data was developed using the same antibody clone with 23762-1-PBS in a different storage buffer formulation.



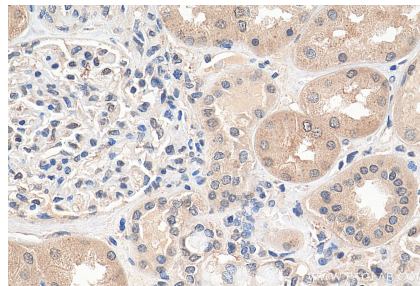
NIH/3T3 cells were subjected to SDS PAGE followed by western blot with 23762-1-AP (RSK2 antibody) at dilution of 1:4000 incubated at room temperature for 1.5 hours. This data was developed using the same antibody clone with 23762-1-PBS in a different storage buffer formulation.



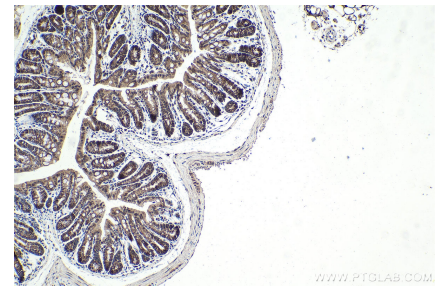
IP result of anti-RSK2 (IP:23762-1-AP, 4ug; Detection:23762-1-AP 1:4000) with K-562 cells lysate 3680 ug. This data was developed using the same antibody clone with 23762-1-PBS in a different storage buffer formulation.



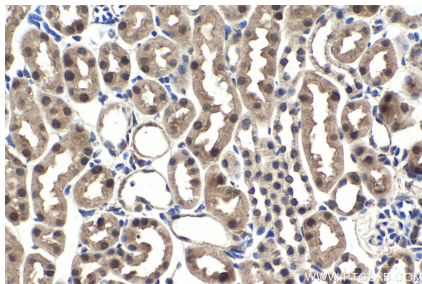
Immunohistochemical analysis of paraffin-embedded human kidney tissue slide using 23762-1-AP (RSK2 antibody) at dilution of 1:200 (under 10x lens). Heat mediated antigen retrieval with Tris-EDTA buffer (pH 9.0). This data was developed using the same antibody clone with 23762-1-PBS in a different storage buffer formulation.



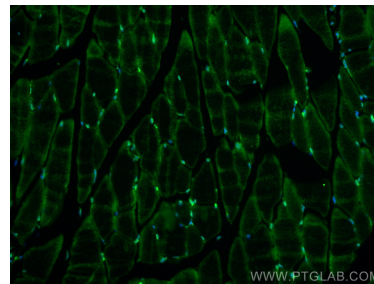
Immunohistochemical analysis of paraffin-embedded human kidney tissue slide using 23762-1-AP (RSK2 antibody) at dilution of 1:200 (under 40x lens). Heat mediated antigen retrieval with Tris-EDTA buffer (pH 9.0). This data was developed using the same antibody clone with 23762-1-PBS in a different storage buffer formulation.



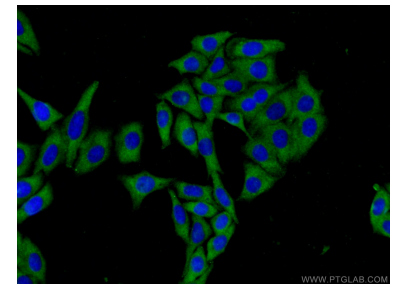
Immunohistochemical analysis of paraffin-embedded mouse colon tissue slide using 23762-1-AP (RSK2 antibody) at dilution of 1:1000 (under 10x lens). Heat mediated antigen retrieval with Tris-EDTA buffer (pH 9.0). This data was developed using the same antibody clone with 23762-1-PBS in a different storage buffer formulation.



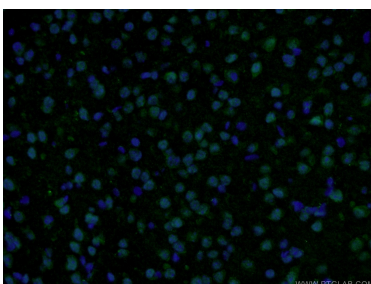
Immunohistochemical analysis of paraffin-embedded mouse kidney tissue slide using 23762-1-AP (RSK2 antibody) at dilution of 1:1000 (under 40x lens). Heat mediated antigen retrieval with Tris-EDTA buffer (pH 9.0). This data was developed using the same antibody clone with 23762-1-PBS in a different storage buffer formulation.



Immunofluorescent analysis of (4% PFA) fixed paraffin-embedded mouse skeletal muscle tissue using RSK2 antibody (23762-1-AP) at dilution of 1:200 and CoraLite® 488-Conjugated Goat Anti-Rabbit IgG(H+L) (SA00013-2). Heat mediated antigen retrieval with Tris-EDTA buffer (pH 9.0). This data was developed using the same antibody clone with 23762-1-PBS in a different storage buffer formulation.



Immunofluorescent analysis of (-20°C Ethanol) fixed HepG2 cells using 23762-1-AP (RSK2 antibody) at dilution of 1:100 and CoraLite 488-Conjugated AffiniPure Goat Anti-Rabbit IgG(H+L). This data was developed using the same antibody clone with 23762-1-PBS in a different storage buffer formulation.



Immunofluorescent analysis of (4% PFA) fixed mouse brain tissue using 23762-1-AP (RSK2 antibody) at dilution of 1:50 and Alexa Fluor 488-conjugated AffiniPure Goat Anti-Rabbit IgG(H+L). This data was developed using the same antibody clone with 23762-1-PBS in a different storage buffer formulation.