

For Research Use Only

# ADM2 Polyclonal antibody

Catalog Number: 23781-1-AP **1 Publications**



## Basic Information

<b>Catalog Number:</b> 23781-1-AP	<b>GenBank Accession Number:</b> BC012864	<b>Purification Method:</b> Antigen Affinity purified
<b>Size:</b> 150ul , Concentration: 1000 µg/ml by Nanodrop and 407 µg/ml by Bradford method using BSA as the standard;	<b>GeneID (NCBI):</b> 79924	<b>Recommended Dilutions:</b> IHC 1:50-1:500
<b>Source:</b> Rabbit	<b>Full Name:</b> adrenomedullin 2	
<b>Isotype:</b> IgG	<b>Calculated MW:</b> 16 kDa	
<b>Immunogen Catalog Number:</b> AG20548		

## Applications

<b>Tested Applications:</b> IHC, ELISA	<b>Positive Controls:</b> IHC : human stomach tissue, mouse stomach tissue, mouse heart tissue
<b>Cited Applications:</b> IF	
<b>Species Specificity:</b> human, mouse	
<b>Cited Species:</b> human	

**Note-IHC: suggested antigen retrieval with TE buffer pH 9.0; (\*) Alternatively, antigen retrieval may be performed with citrate buffer pH 6.0**

## Background Information

ADM2 also named as adrenomedullin 2 or IMDS is a 148 amino-acid secreted protein, which belongs to adrenomedullin family of calcitonin-related peptide hormones and is expressed in the esophagus, stomach, jejunum, ileum, ileocecum, ascending colon, transverse colon, descending colon and rectum. ADM2 activates the cAMP-dependent pathway and may play a role in regulating gastrointestinal and cardiovascular bioactivities. ADM2 play a role in the regulation of peripheral tissues by calcitonin receptor-like receptor.

## Notable Publications

Author	Pubmed ID	Journal	Application
Lifang Ye	35720354	Front Immunol	IF

## Storage

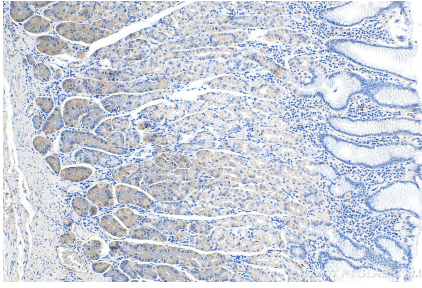
**Storage:**  
Store at -20°C. Stable for one year after shipment.  
**Storage Buffer:**  
PBS with 0.02% sodium azide and 50% glycerol pH 7.3.  
Aliquoting is unnecessary for -20°C storage

**\*\*\* 20ul sizes contain 0.1% BSA**

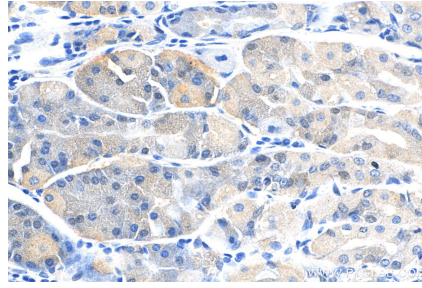
For technical support and original validation data for this product please contact:  
T: 1 (888) 4PTGLAB (1-888-478-4522) (toll free in USA), or 1(312) 455-8498 (outside USA)  
E: proteintech@ptglab.com  
W: ptglab.com

**This product is exclusively available under Proteintech Group brand and is not available to purchase from any other manufacturer.**

## Selected Validation Data



Immunohistochemical analysis of paraffin-embedded human stomach tissue slide using 23781-1-AP (ADM2 antibody) at dilution of 1:200 (under 10x lens).



Immunohistochemical analysis of paraffin-embedded human stomach tissue slide using 23781-1-AP (ADM2 antibody) at dilution of 1:200 (under 40x lens).