

For Research Use Only

Neprilysin/CD10 Polyclonal antibody

Catalog Number: 23782-1-AP

1 Publications



Basic Information

Catalog Number: 23782-1-AP	GenBank Accession Number: BC101632	Purification Method: Antigen affinity purification
Size: 150ul , Concentration: 700 ug/ml by Nanodrop and 440 ug/ml by Bradford method using BSA as the standard;	GeneID (NCBI): 4311	Recommended Dilutions: IHC 1:20-1:200 IF-P 1:50-1:500
Source: Rabbit	UNIPROT ID: P08473	
Isotype: IgG	Full Name: membrane metallo-endorpeptidase	
Immunogen Catalog Number: AG20634	Calculated MW: 750 aa, 86 kDa	

Applications

Tested Applications: IHC, IF-P, ELISA	Positive Controls:
Cited Applications: IF	IHC : human kidney tissue, human renal cell carcinoma tissue
Species Specificity: human	IF-P : human kidney tissue,
Cited Species: mouse	
Note-IHC: suggested antigen retrieval with TE buffer pH 9.0; (*) Alternatively, antigen retrieval may be performed with citrate buffer pH 6.0	

Background Information

CD10, also known as neprilysin, membrane metallo-endorpeptidase (MME), neutral endopeptidase (NEP), or common acute lymphoblastic leukemia antigen (CALLA), is a 100-kDa type II transmembrane glycoprotein belonging to peptidase M13 family (PMID: 7760013; 8102558). Among hematopoietic cells, CD10 is expressed on granulocytes, B cell precursors, mature germinal center B cells, a subset of immature thymocytes (PMID: 13679451). CD10 is also expressed on a variety of nonhematopoietic cell types, including bronchial epithelial cells, cultured fibroblasts, bone marrow stromal cells, renal proximal tubular epithelial cells, breast myoepithelium, biliary canaliculi (PMID: 8102558). CD10 is a cell surface peptidase that cleaves peptide bonds on the amino side of hydrophobic amino acids and inactivates a variety of physiologically active peptides. Loss or decreases in CD10 expression have been reported in a variety of malignancies (PMID: 16054017).

Notable Publications

Author	Pubmed ID	Journal	Application
Zhaohui Zhu	38378361	Clin Breast Cancer	IF

Storage

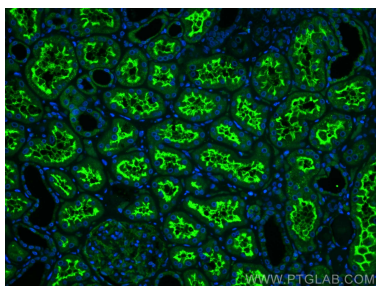
Storage:
Store at -20°C. Stable for one year after shipment.
Storage Buffer:
PBS with 0.02% sodium azide and 50% glycerol pH 7.3.
Aliquoting is unnecessary for -20°C storage

*** 20ul sizes contain 0.1% BSA

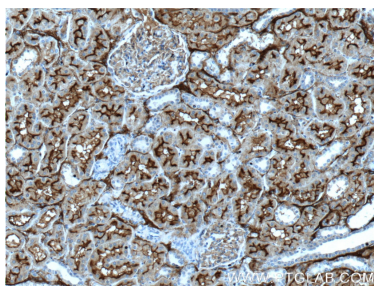
For technical support and original validation data for this product please contact:
T: 1 (888) 4PTGLAB (1-888-478-4522) (toll free in USA), or 1(312) 455-8498 (outside USA)
E: proteintech@ptglab.com
W: ptglab.com

This product is exclusively available under Proteintech Group brand and is not available to purchase from any other manufacturer.

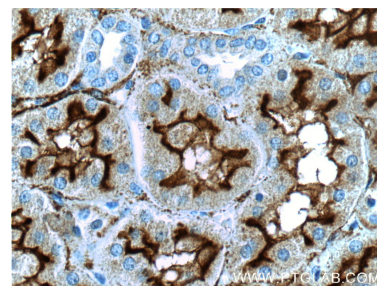
Selected Validation Data



Immunofluorescent analysis of (4% PFA) fixed human kidney tissue using Nephrilysin/CD10 antibody (23782-1-AP) at dilution of 1:200 and CoraLite®488-Conjugated AffiniPure Goat Anti-Rabbit IgG(H+L).



Immunohistochemical analysis of paraffin-embedded human kidney tissue slide using 23782-1-AP (Nephrilysin/CD10 Antibody) at dilution of 1:200 (under 10x lens).



Immunohistochemical analysis of paraffin-embedded human kidney tissue slide using 23782-1-AP (Nephrilysin/CD10 Antibody) at dilution of 1:200 (under 40x lens).