

For Research Use Only

# PRELP Polyclonal antibody

Catalog Number: 23783-1-AP



## Basic Information

<b>Catalog Number:</b> 23783-1-AP	<b>GenBank Accession Number:</b> BC032498	<b>Purification Method:</b> Antigen affinity purification
<b>Size:</b> 150ul , Concentration: 500 µg/ml by Nanodrop and 240 µg/ml by Bradford method using BSA as the standard;	<b>GeneID (NCBI):</b> 5549	<b>Recommended Dilutions:</b> WB 1:500-1:2000 IF 1:50-1:500
<b>Source:</b> Rabbit	<b>Full Name:</b> proline/arginine-rich end leucine-rich repeat protein	
<b>Isotype:</b> IgG	<b>Calculated MW:</b> 44 kDa	
<b>Immunogen Catalog Number:</b> AG20656	<b>Observed MW:</b> 44 kDa	

## Applications

<b>Tested Applications:</b> IF, WB, ELISA	<b>Positive Controls:</b> WB : L02 cells, SMMC-7721 cells IF : U2OS cells,
<b>Species Specificity:</b> human	

## Background Information

PRELP (proline/arginine-rich end leucine-rich repeat protein), also known as MST161, MSTP161, prolargin, or SLRR2A, belongs to the class II subfamily of the small leucine-rich proteoglycan (SLRP) family. PRELP is a small leucine-rich proteoglycan (SLRP), which binds collagen to basement membranes or cartilage as a matrix protein. PRELP has prognostic value and regulates cell proliferation and migration in hepatocellular carcinoma, may serve as a potential prognostic marker and a treatment target against HCC progression (PMID: 33033521).

## Storage

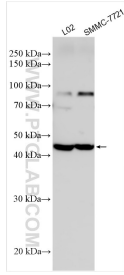
**Storage:**  
Store at -20°C. Stable for one year after shipment.  
**Storage Buffer:**  
PBS with 0.02% sodium azide and 50% glycerol pH 7.3.  
Aliquoting is unnecessary for -20°C storage

\*\*\* 20ul sizes contain 0.1% BSA

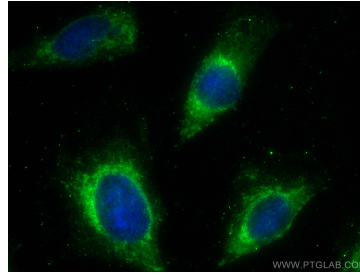
For technical support and original validation data for this product please contact:  
T: 1 (888) 4PTGLAB (1-888-478-4522) (toll free in USA), or 1(312) 455-8498 (outside USA)  
E: proteintech@ptglab.com  
W: ptglab.com

This product is exclusively available under Proteintech Group brand and is not available to purchase from any other manufacturer.

## Selected Validation Data



Various lysates were subjected to SDS PAGE followed by western blot with 23783-1-AP (PRELP antibody) at dilution of 1:1000 incubated at room temperature for 1.5 hours.



Immunofluorescent analysis of (-20°C Ethanol) fixed U2OS cells using PRELP antibody (23783-1-AP) at dilution of 1:200 and CoraLite® 488-Conjugated AffiniPure Goat Anti-Rabbit IgG(H+L).