

For Research Use Only

# PTPRU Polyclonal antibody

Catalog Number: 23786-1-AP



## Basic Information

### Catalog Number:

23786-1-AP

### Size:

150ul, Concentration: 500 ug/ml by Nanodrop;

### Source:

Rabbit

### Isotype:

IgG

### Immunogen Catalog Number:

AG20667

### GenBank Accession Number:

BC146655

### GeneID (NCBI):

10076

### UNIPROT ID:

Q92729

### Full Name:

protein tyrosine phosphatase, receptor type, U

### Calculated MW:

1446 aa, 162 kDa

### Observed MW:

170 kDa

### Purification Method:

Antigen Affinity purified

### Recommended Dilutions:

WB 1:1000-1:4000

IF/ICC 1:50-1:500

## Applications

### Tested Applications:

WB, IF/ICC, ELISA

### Species Specificity:

human

### Positive Controls:

WB : A549 cells, MCF-7 cells, U-251 cells

IF/ICC : U-251 cells,

## Background Information

PTPRU (protein tyrosine phosphatase, receptor type, U) is also named as PCP-2, PTP-J, PTP pi, PTP-RO and R-PTP-psi. Protein tyrosine phosphatase plays a crucial role in the regulation of signal transduction during diverse cell functions, including cell activation, proliferation, differentiation, survival, and metabolic homeostasis. PTPases are classified into two groups, membrane-spanning receptor-type (R-PTPases) and cytosol type. The human PTPRU cDNA clone encodes a polypeptide of 1,439 amino acids and the predicted molecular mass of the PTPRU protein is 162 kDa. It has reported that SCF induced tyrosine phosphorylation of the full-length PTPRU (190 kDa) and the proteolytic forms of PTPRU (100 and 80 kDa). A non-tyrosine phosphorylated 73 kDa band was detected in addition to those of 190, 90, and 80 kDa. (PMID: 10397721).

## Storage

### Storage:

Store at -20°C. Stable for one year after shipment.

### Storage Buffer:

PBS with 0.02% sodium azide and 50% glycerol pH 7.3.

Aliquoting is unnecessary for -20°C storage

\*\*\* 20ul sizes contain 0.1% BSA

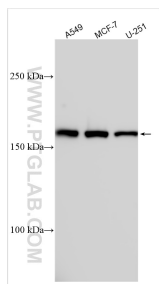
For technical support and original validation data for this product please contact:

T: 1 (888) 4PTGLAB (1-888-478-4522) (toll free in USA), or 1(312) 455-8498 (outside USA)

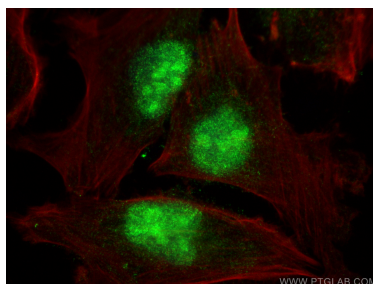
E: [proteintech@ptglab.com](mailto:proteintech@ptglab.com)  
W: [ptglab.com](http://ptglab.com)

This product is exclusively available under Proteintech Group brand and is not available to purchase from any other manufacturer.

## Selected Validation Data



Various lysates were subjected to SDS PAGE followed by western blot with 23786-1-AP (PTPRU antibody) at dilution of 1:2000 incubated at room temperature for 1.5 hours.



Immunofluorescent analysis of (4% PFA) fixed U-251 cells using PTPRU antibody (23786-1-AP) at dilution of 1:200 and Multi-rAb CoraLite® Plus 488-Goat Anti-Rabbit Recombinant Secondary Antibody (H+L) (RGAR002), CL594-Phalloidin (red).