

For Research Use Only

FATE1 Polyclonal antibody

Catalog Number: 23809-1-AP



Basic Information

Catalog Number:

23809-1-AP

Size:

150ul, Concentration: 600 ug/ml by Nanodrop and 360 ug/ml by Bradford method using BSA as the standard;

Source:

Rabbit

Isotype:

IgG

Immunogen Catalog Number:

AG20757

GenBank Accession Number:

BC022064

GeneID (NCBI):

89885

UNIPROT ID:

Q969F0

Full Name:

fetal and adult testis expressed 1

Calculated MW:

21 kDa

Observed MW:

21 kDa

Purification Method:

Antigen affinity purification

Recommended Dilutions:

WB 1:500-1:1000

Applications

Tested Applications:

WB, ELISA

Species Specificity:

human, mouse

Positive Controls:

WB : human testis tissue, mouse testis tissue

Background Information

FATE1, also named as Fetal and adult testis expressed transcript protein, express predominantly in testis, with some expression in lung, heart, kidney, adrenal gland and whole brain. FATE might represent a novel target gene of SF-1 in testicular differentiation and germ cell development. FATE1 also involves in the regulation of a wide variety of cellular processes, including the cell cycle, immune responses, signaling cascades and developmental events through target proteins, such as cyclins, cyclin-dependent kinase inhibitors.

Storage

Storage:

Store at -20°C. Stable for one year after shipment.

Storage Buffer:

PBS with 0.02% sodium azide and 50% glycerol pH 7.3.

Aliquoting is unnecessary for -20°C storage

*** 20ul sizes contain 0.1% BSA

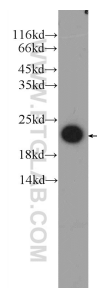
For technical support and original validation data for this product please contact:

T: 1 (888) 4PTGLAB (1-888-478-4522) (toll free in USA), or 1(312) 455-8498 (outside USA)

E: proteintech@ptglab.com
W: ptglab.com

This product is exclusively available under Proteintech Group brand and is not available to purchase from any other manufacturer.

Selected Validation Data



human testis tissue were subjected to SDS PAGE followed by western blot with 23809-1-AP (FATE1 Antibody) at dilution of 1:800 incubated at room temperature for 1.5 hours.