

For Research Use Only

# Kallikrein 7 Polyclonal antibody

Catalog Number: 23810-1-AP



## Basic Information

<b>Catalog Number:</b> 23810-1-AP	<b>GenBank Accession Number:</b> BC032005	<b>Purification Method:</b> Antigen Affinity purified
<b>Size:</b> 150ul , Concentration: 400 ug/ml by Nanodrop;	<b>GeneID (NCBI):</b> 5650	<b>Recommended Dilutions:</b> WB 1:1000-1:6000 IF/ICC 1:50-1:500
<b>Source:</b> Rabbit	<b>UNIPROT ID:</b> P49862	
<b>Isotype:</b> IgG	<b>Full Name:</b> kallikrein-related peptidase 7	
<b>Immunogen Catalog Number:</b> AG20760	<b>Calculated MW:</b> 28 kDa	
	<b>Observed MW:</b> 27-30 kDa	

## Applications

<b>Tested Applications:</b> WB, IF/ICC, ELISA	<b>Positive Controls:</b>
<b>Species Specificity:</b> human, mouse, rat	<b>WB :</b> mouse skin tissue, rat skin tissue <b>IF/ICC :</b> A431 cells,

## Background Information

Kallikrein-7 (KLK7), also known as SCCE, PRSS6, is a member of the kallikrein subfamily of serine proteases involved in various enzymatic processes. KLK7 is abundantly expressed in the skin and is expressed by keratinocytes in the epidermis (PMID: 10974542).

## Storage

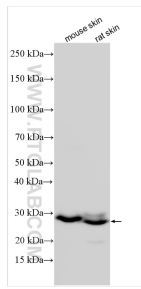
**Storage:**  
Store at -20°C. Stable for one year after shipment.  
**Storage Buffer:**  
PBS with 0.02% sodium azide and 50% glycerol pH 7.3.  
**Aliquoting is unnecessary for -20°C storage**

\*\*\* 20ul sizes contain 0.1% BSA

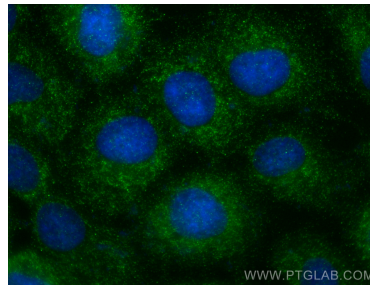
For technical support and original validation data for this product please contact:  
T: 1 (888) 4PTGLAB (1-888-478-4522) (toll free in USA), or 1(312) 455-8498 (outside USA)  
E: [proteintech@ptglab.com](mailto:proteintech@ptglab.com)  
W: [ptglab.com](http://ptglab.com)

This product is exclusively available under Proteintech Group brand and is not available to purchase from any other manufacturer.

## Selected Validation Data



Various lysates were subjected to SDS PAGE followed by western blot with 23810-1-AP (Kallikrein 7 antibody) at dilution of 1:3000 incubated at room temperature for 1.5 hours.



Immunofluorescent analysis of (-20°C Methanol) fixed A431 cells using KLIK7 antibody (23810-1-AP) at dilution of 1:200 and CoraLite® 488-Conjugated Goat Anti-Rabbit IgG(H+L) (SA00013-2).