

For Research Use Only

# Kallikrein 7 Polyclonal antibody, PBS Only

Catalog Number: 23810-1-PBS



## Basic Information

**Catalog Number:**

23810-1-PBS

**Size:**

100ug, Concentration: 1 mg/ml by Nanodrop;

**Source:**

Rabbit

**Isotype:**

IgG

**Immunogen Catalog Number:**

AG20760

**GenBank Accession Number:**

BC032005

**GeneID (NCBI):**

5650

**UNIPROT ID:**

P49862

**Full Name:**

kallikrein-related peptidase 7

**Calculated MW:**

28 kDa

**Observed MW:**

27-30 kDa

**Purification Method:**

Antigen Affinity purified

## Applications

**Tested Applications:**

WB, IF/ICC, Indirect ELISA

**Species Specificity:**

human, mouse, rat

## Background Information

Kallikrein-7 (KLK7), also known as SCCE, PRSS6, is a member of the kallikrein subfamily of serine proteases involved in various enzymatic processes. KLK7 is abundantly expressed in the skin and is expressed by keratinocytes in the epidermis (PMID: 10974542).

## Storage

**Storage:**

Store at -80°C.

**Storage Buffer:**

PBS only, pH7.3

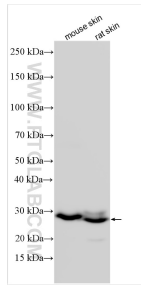
For technical support and original validation data for this product please contact:

T: 1 (888) 4PTGLAB (1-888-478-4522) (toll free in USA), or 1(312) 455-8498 (outside USA)

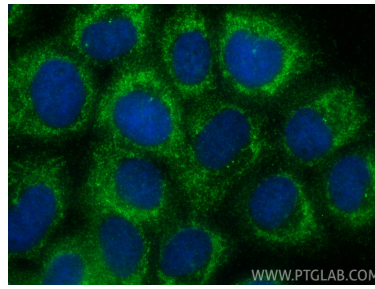
E: [proteintech@ptglab.com](mailto:proteintech@ptglab.com)  
W: [ptglab.com](http://ptglab.com)

**This product is exclusively available under Proteintech Group brand and is not available to purchase from any other manufacturer.**

## Selected Validation Data



Various lysates were subjected to SDS PAGE followed by western blot with 23810-1-AP (Kallikrein 7 antibody) at dilution of 1:3000 incubated at room temperature for 1.5 hours. This data was developed using the same antibody clone with 23810-1-PBS in a different storage buffer formulation.



Immunofluorescent analysis of (-20°C Methanol) fixed A431 cells using Kallikrein 7 antibody (23810-1-AP) at dilution of 1:200 and CoraLite®488-Conjugated Goat Anti-Rabbit IgG(H+L) (SA00013-2). This data was developed using the same antibody clone with 23810-1-PBS in a different storage buffer formulation.