

For Research Use Only

RSRC1 Polyclonal antibody

Catalog Number: 23826-1-AP

Featured Product

1 Publications



Basic Information

Catalog Number:

23826-1-AP

Size:

150ul, Concentration: 1000 ug/ml by Nanodrop and 667 ug/ml by Bradford method using BSA as the standard;

Source:

Rabbit

Isotype:

IgG

Immunogen Catalog Number:

AG20604

GenBank Accession Number:

BC006982

GeneID (NCBI):

51319

UNIPROT ID:

Q96IZ7

Full Name:

arginine/serine-rich coiled-coil 1

Calculated MW:

334 aa, 39 kDa

Observed MW:

38 kDa, 50 kDa

Purification Method:

Antigen Affinity purified

Recommended Dilutions:

WB 1:500-1:3000

IHC 1:20-1:200

IF/ICC 1:200-1:800

Applications

Tested Applications:

WB, IHC, IF/ICC, ELISA

Cited Applications:

WB, IHC

Species Specificity:

human

Cited Species:

human

Note-IHC: suggested antigen retrieval with TE buffer pH 9.0; (*) Alternatively, antigen retrieval may be performed with citrate buffer pH 6.0

Positive Controls:

WB : HeLa cells, HepG2 cells

IHC : human small intestine tissue, human liver cancer tissue

IF/ICC : HepG2 cells,

Background Information

RSRC1, also named as SRRP53, is a novel SR-related protein of an apparent molecular mass of 53 kDa (45-53 kDa). It is isolated in a gene trap screen that identifies proteins which localize to the nuclear speckles. RSRC1 plays a role in pre-mRNA splicing and constitutive.

Notable Publications

Author	Pubmed ID	Journal	Application
Shijun Yu	31257492	Mol Med Rep	WB,IHC

Storage

Storage:

Store at -20°C. Stable for one year after shipment.

Storage Buffer:

PBS with 0.02% sodium azide and 50% glycerol pH 7.3.

Aliquoting is unnecessary for -20°C storage

*** 20ul sizes contain 0.1% BSA

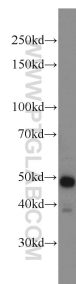
For technical support and original validation data for this product please contact:

T: 1 (888) 4PTGLAB (1-888-478-4522) (toll free in USA), or 1(312) 455-8498 (outside USA)

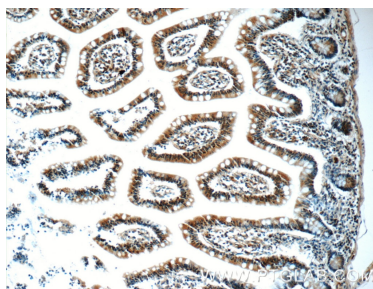
E: proteintech@ptglab.com
W: ptglab.com

This product is exclusively available under Proteintech Group brand and is not available to purchase from any other manufacturer.

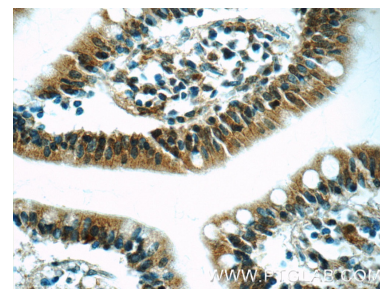
Selected Validation Data



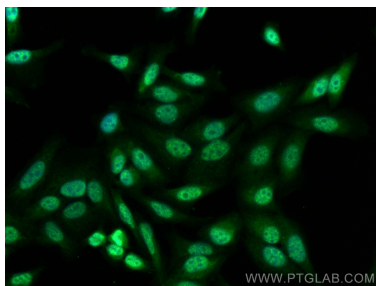
HeLa cells were subjected to SDS PAGE followed by western blot with 23826-1-AP (RSRC1 Antibody) at dilution of 1:1500 incubated at room temperature for 1.5 hours.



Immunohistochemical analysis of paraffin-embedded human small intestine tissue slide using 23826-1-AP (RSRC1 Antibody) at dilution of 1:50 (under 10x lens).



Immunohistochemical analysis of paraffin-embedded human small intestine tissue slide using 23826-1-AP (RSRC1 Antibody) at dilution of 1:50 (under 40x lens).



Immunofluorescent analysis of (4% PFA) fixed HepG2 cells using RSRC1 antibody (23826-1-AP) at dilution of 1:400 and CoraLite® 488-Conjugated AffiniPure Goat Anti-Rabbit IgG(H+L) (SA00013-2).