

For Research Use Only

RSRC1 Polyclonal antibody, PBS Only

Catalog Number: 23826-1-PBS

Featured Product



Basic Information

Catalog Number:

23826-1-PBS

Size:

100ug, Concentration: 1 mg/ml by Nanodrop;

Source:

Rabbit

Isotype:

IgG

Immunogen Catalog Number:

AG20604

GenBank Accession Number:

BC006982

GeneID (NCBI):

51319

UNIPROT ID:

Q961Z7

Full Name:

arginine/serine-rich coiled-coil 1

Calculated MW:

334 aa, 39 kDa

Observed MW:

38 kDa, 50 kDa

Purification Method:

Antigen Affinity purified

Applications

Tested Applications:

WB, IHC, IF/ICC, Indirect ELISA

Species Specificity:

human

Background Information

RSRC1, also named as SRRP53, is a novel SR-related protein of an apparent molecular mass of 53 kDa (45-53 kDa). It is isolated in a gene trap screen that identifies proteins which localize to the nuclear speckles. RSRC1 plays a role in pre-mRNA splicing and constitutive.

Storage

Storage:

Store at -80°C.

Storage Buffer:

PBS Only

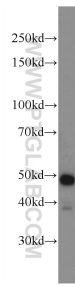
For technical support and original validation data for this product please contact:

T: 1 (888) 4PTGLAB (1-888-478-4522) (toll free in USA), or 1(312) 455-8498 (outside USA)

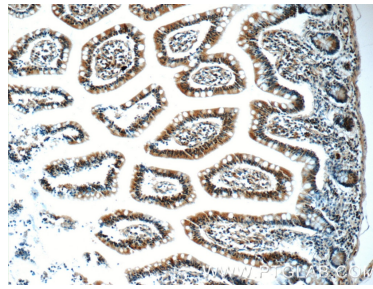
E: proteintech@ptglab.com
W: ptglab.com

This product is exclusively available under Proteintech Group brand and is not available to purchase from any other manufacturer.

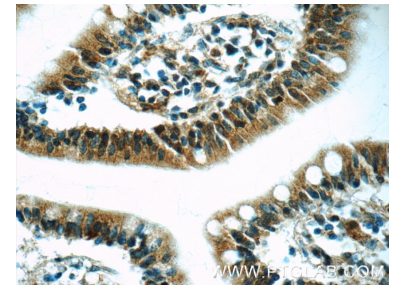
Selected Validation Data



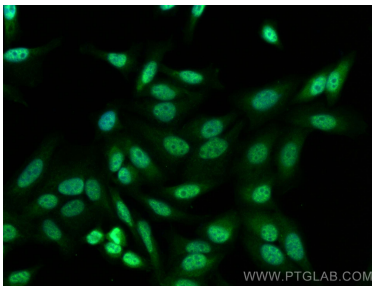
HeLa cells were subjected to SDS PAGE followed by western blot with 23826-1-AP (RSRC1 Antibody) at dilution of 1:1500 incubated at room temperature for 1.5 hours. This data was developed using the same antibody clone with 23826-1-PBS in a different storage buffer formulation.



Immunohistochemical analysis of paraffin-embedded human small intestine tissue slide using 23826-1-AP (RSRC1 Antibody) at dilution of 1:50 (under 10x lens). This data was developed using the same antibody clone with 23826-1-PBS in a different storage buffer formulation.



Immunohistochemical analysis of paraffin-embedded human small intestine tissue slide using 23826-1-AP (RSRC1 Antibody) at dilution of 1:50 (under 40x lens). This data was developed using the same antibody clone with 23826-1-PBS in a different storage buffer formulation.



Immunofluorescent analysis of (4% PFA) fixed HepG2 cells using RSRC1 antibody (23826-1-AP) at dilution of 1:400 and CoraLite®488-Conjugated AffiniPure Goat Anti-Rabbit IgG(H+L) (SA00013-2). This data was developed using the same antibody clone with 23826-1-PBS in a different storage buffer formulation.