

For Research Use Only

# LYRM7 Polyclonal antibody

Catalog Number: 23833-1-AP



## Basic Information

### Catalog Number:

23833-1-AP

### Size:

150ul , Concentration: 700 ug/ml by Nanodrop and 340 ug/ml by Bradford method using BSA as the standard;

### Source:

Rabbit

### Isotype:

IgG

### Immunogen Catalog Number:

AG20696

### GenBank Accession Number:

BC047079

### GeneID (NCBI):

90624

### UNIPROT ID:

Q5U5X0

### Full Name:

Lyrm7 homolog (mouse)

### Calculated MW:

104 aa, 12 kDa

### Purification Method:

Antigen Affinity purified

### Recommended Dilutions:

IHC 1:20-1:200

IF/ICC 1:10-1:100

## Applications

### Tested Applications:

IHC, IF/ICC, ELISA

### Species Specificity:

human

**Note-IHC: suggested antigen retrieval with TE buffer pH 9.0; (\*) Alternatively, antigen retrieval may be performed with citrate buffer pH 6.0**

### Positive Controls:

IHC : human liver tissue, human hepatocirrhosis tissue, human kidney tissue

IF/ICC : HepG2 cells,

## Storage

### Storage:

Store at -20°C. Stable for one year after shipment.

### Storage Buffer:

PBS with 0.02% sodium azide and 50% glycerol pH 7.3.

Aliquoting is unnecessary for -20°C storage

\*\*\* 20ul sizes contain 0.1% BSA

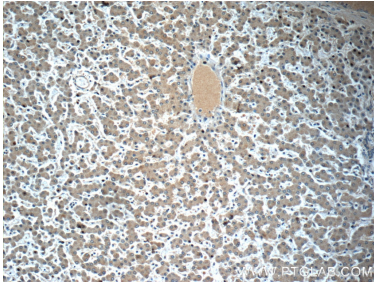
For technical support and original validation data for this product please contact:

T: 1 (888) 4PTGLAB (1-888-478-4522) (toll free in USA), or 1(312) 455-8498 (outside USA)

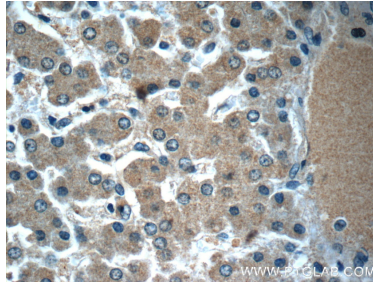
E: [proteintech@ptglab.com](mailto:proteintech@ptglab.com)  
W: [ptglab.com](http://ptglab.com)

This product is exclusively available under Proteintech Group brand and is not available to purchase from any other manufacturer.

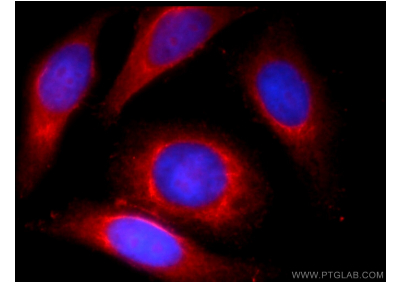
## Selected Validation Data



Immunohistochemical analysis of paraffin-embedded human liver slide using 23833-1-AP (LYRM7 Antibody) at dilution of 1:50 (under 10x lens).



Immunohistochemical analysis of paraffin-embedded human liver slide using 23833-1-AP (LYRM7 Antibody) at dilution of 1:50 (under 40x lens).



Immunofluorescent analysis of HepG2 cells using 23833-1-AP (LYRM7 antibody) at dilution of 1:25 and Rhodamine-Goat anti-Rabbit IgG.