

For Research Use Only

CLIP1 Polyclonal antibody

Catalog Number: 23839-1-AP

5 Publications



Basic Information

Catalog Number:

23839-1-AP

Size:

150ul, Concentration: 1300 ug/ml by Nanodrop and 513 ug/ml by Bradford method using BSA as the standard;

Source:

Rabbit

Isotype:

IgG

Immunogen Catalog Number:

AG20811

GenBank Accession Number:

BC126305

GeneID (NCBI):

6249

UNIPROT ID:

P30622

Full Name:

CAP-GLY domain containing linker protein 1

Calculated MW:

1438 aa, 162 kDa

Observed MW:

160-170 kDa, 135 kDa

Purification Method:

Antigen Affinity purified

Recommended Dilutions:

WB 1:1000-1:6000

IP 0.5-4.0 ug for 1.0-3.0 mg of total protein lysate

IF/ICC 1:50-1:500

Applications

Tested Applications:

WB, IF/ICC, IP, ELISA

Cited Applications:

WB, IF, ELISA

Species Specificity:

human, mouse, rat

Cited Species:

human, mouse, rat

Positive Controls:

WB : HeLa cells, HEK-293 cells, MCF-7 cells, mouse kidney tissue, rat kidney tissue, U-937 cells

IP : HeLa cells,

IF/ICC : HeLa cells,

Notable Publications

Author	Pubmed ID	Journal	Application
Yunfeng Hu	36209218	Cell Death Dis	WB
Tianyu Wu	36395215	Science	IF
Jingjing Zhang	35547804	Front Cell Dev Biol	WB

Storage

Storage:

Store at -20°C. Stable for one year after shipment.

Storage Buffer:

PBS with 0.02% sodium azide and 50% glycerol pH 7.3.

Aliquoting is unnecessary for -20°C storage

*** 20ul sizes contain 0.1% BSA

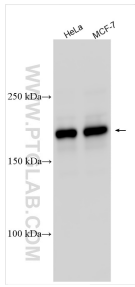
For technical support and original validation data for this product please contact:

T: 1 (888) 4PTGLAB (1-888-478-4522) (toll free in USA), or 1(312) 455-8498 (outside USA)

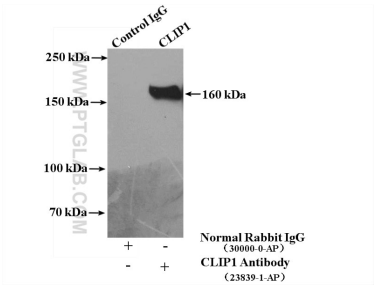
E: proteintech@ptglab.com
W: ptglab.com

This product is exclusively available under Proteintech Group brand and is not available to purchase from any other manufacturer.

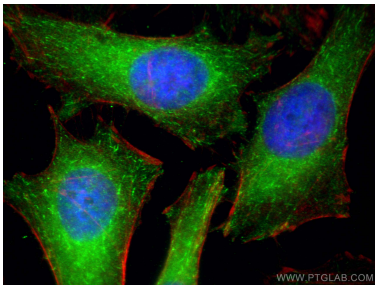
Selected Validation Data



Various lysates were subjected to SDS PAGE followed by western blot with 23839-1-AP (CLIP1 antibody) at dilution of 1:3000 incubated at room temperature for 1.5 hours.



IP result of anti-CLIP1 (IP:23839-1-AP, 4ug; Detection:23839-1-AP 1:2000) with HeLa cells lysate 2400ug.



Immunofluorescent analysis of (-20°C Ethanol) fixed HeLa cells using CLIP1 antibody (23839-1-AP) at dilution of 1:200 and Multi-rAb CoraLite® Plus 488-Goat Anti-Rabbit Recombinant Secondary Antibody (H+L) (RGAR002), CL594-phalloidin (red).