

For Research Use Only

# NARG1 Polyclonal antibody

Catalog Number: 23845-1-AP



## Basic Information

<b>Catalog Number:</b> 23845-1-AP	<b>GenBank Accession Number:</b> BC093928	<b>Purification Method:</b> Antigen Affinity purified
<b>Size:</b> 150ul , Concentration: 400 µg/ml by Nanodrop and 287 µg/ml by Bradford method using BSA as the standard;	<b>GeneID (NCBI):</b> 80155	<b>Recommended Dilutions:</b> WB 1:200-1:1000 IHC 1:250-1:1000 IF 1:50-1:500
<b>Source:</b> Rabbit	<b>Full Name:</b> NMDA receptor regulated 1	
<b>Isotype:</b> IgG	<b>Calculated MW:</b> 866 aa, 101 kDa	
<b>Immunogen Catalog Number:</b> AG20842	<b>Observed MW:</b> 95-100 kDa	

## Applications

<b>Tested Applications:</b> IF, IHC, WB, ELISA	<b>Positive Controls:</b> WB : HeLa cells, HEK-293 cells IHC : human stomach cancer tissue, IF : HeLa cells,
<b>Species Specificity:</b> human, mouse	
<b>Note-IHC: suggested antigen retrieval with TE buffer pH 9.0; (*) Alternatively, antigen retrieval may be performed with citrate buffer pH 6.0</b>	

## Background Information

NAA15 (N-alpha-acetyltransferase 15) is a subunit of both the NatA and NatE complexes, and its role is to position the catalytic subunits in close vicinity to the nascent polypeptides (PMID: 33557580). Human NAA15 encodes an 866 amino acid (~105 kDa) protein, NAA15, containing tetratricopeptide repeat domains and a putative bipartite nuclear localization signal (PMID: 29656860). NAA15 was implicated in human disease and loss-of-function NAA15 variants in large cohorts of patients with autism spectrum disorder and/or ID (PMID: 33103328).

## Storage

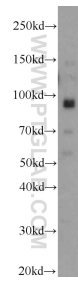
**Storage:**  
Store at -20°C. Stable for one year after shipment.  
**Storage Buffer:**  
PBS with 0.02% sodium azide and 50% glycerol pH 7.3.  
Aliquoting is unnecessary for -20°C storage

\*\*\* 20ul sizes contain 0.1% BSA

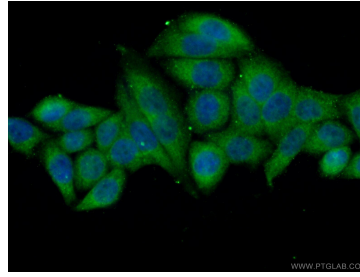
For technical support and original validation data for this product please contact:  
T: 1 (888) 4PTGLAB (1-888-478-4522) (toll free in USA), or 1(312) 455-8498 (outside USA)  
E: proteintech@ptglab.com  
W: ptglab.com

This product is exclusively available under Proteintech Group brand and is not available to purchase from any other manufacturer.

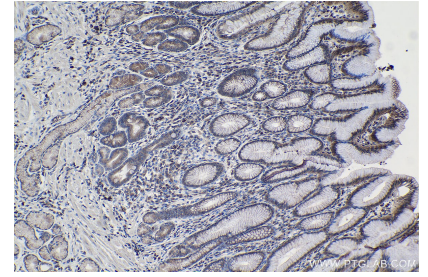
## Selected Validation Data



HeLa cells were subjected to SDS PAGE followed by western blot with 23845-1-AP (NARG1 antibody) at dilution of 1:300 incubated at room temperature for 1.5 hours.



Immunofluorescent analysis of (10% Formaldehyde) fixed HeLa cells using 23845-1-AP (NARG1 antibody) at dilution of 1:50 and Alexa Fluor 488-conjugated AffiniPure Goat Anti-Rabbit IgG(H+L).



Immunohistochemical analysis of paraffin-embedded human stomach cancer tissue slide using 23845-1-AP (NARG1 antibody) at dilution of 1:500 (under 10x lens). Heat mediated antigen retrieval with Tris-EDTA buffer (pH 9.0).