

For Research Use Only

TMEM208 Polyclonal antibody

Catalog Number: 23882-1-AP **3 Publications**



Basic Information

Catalog Number: 23882-1-AP	GenBank Accession Number: BC003080	Purification Method: Antigen Affinity purified
Size: 150ul , Concentration: 500 µg/ml by Nanodrop and 347 µg/ml by Bradford method using BSA as the standard;	GeneID (NCBI): 29100	Recommended Dilutions: WB 1:200-1:1000 IHC 1:50-1:500
Source: Rabbit	Full Name: transmembrane protein 208	
Isotype: IgG	Calculated MW: 173 aa, 20 kDa	
Immunogen Catalog Number: AG20845	Observed MW: 19-29 kDa	

Applications

Tested Applications: IHC, WB, ELISA	Positive Controls:
Cited Applications: WB	WB : mouse brain tissue,
Species Specificity: human, mouse	IHC : human stomach tissue,
Cited Species: human	

Note-IHC: suggested antigen retrieval with TE buffer pH 9.0; (*) Alternatively, antigen retrieval may be performed with citrate buffer pH 6.0

Background Information

Transmembrane protein 208 (TMEM208) can regulate both autophagy and ER stress. When overexpressed, TMEM208 impaired autophagy as characterized by the decrease of the accumulation of LC3-II, decreased degradation of autophagic substrates, and reduced expression of critical effectors and vital molecules of the ER stress and autophagy processes. (PMID: 23691174)

Notable Publications

Author	Pubmed ID	Journal	Application
Xihui Liu	35654861	Nat Cancer	WB
Brianna E Talbot	31266804	J Biol Chem	WB
Jicheng Yang	36724073	Cell Rep	WB

Storage

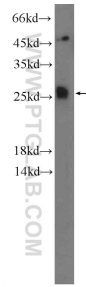
Storage:
Store at -20°C. Stable for one year after shipment.
Storage Buffer:
PBS with 0.02% sodium azide and 50% glycerol pH 7.3.
Aliquoting is unnecessary for -20°C storage

*** 20ul sizes contain 0.1% BSA

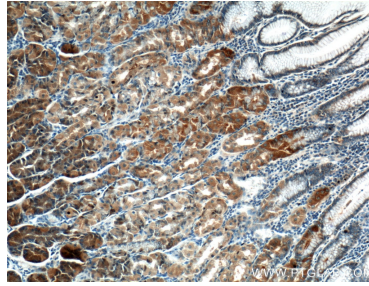
For technical support and original validation data for this product please contact:
T: 1 (888) 4PTGLAB (1-888-478-4522) (toll free in USA), or 1(312) 455-8498 (outside USA)
E: proteintech@ptglab.com
W: ptglab.com

This product is exclusively available under Proteintech Group brand and is not available to purchase from any other manufacturer.

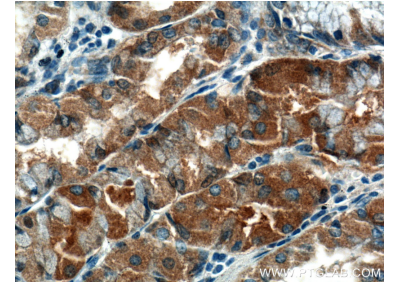
Selected Validation Data



mouse brain tissue were subjected to SDS PAGE followed by western blot with 23882-1-AP (TMEM208 Antibody) at dilution of 1:300 incubated at room temperature for 1.5 hours.



Immunohistochemical analysis of paraffin-embedded human stomach tissue slide using 23882-1-AP (TMEM208 Antibody) at dilution of 1:200 (under 10x lens).



Immunohistochemical analysis of paraffin-embedded human stomach tissue slide using 23882-1-AP (TMEM208 Antibody) at dilution of 1:200 (under 40x lens).