

For Research Use Only

ODF2L Polyclonal antibody

Catalog Number: 23887-1-AP

Featured Product

2 Publications



Basic Information

Catalog Number: 23887-1-AP	GenBank Accession Number: BC009779	Purification Method: Antigen Affinity purified
Size: 150ul , Concentration: 400 µg/ml by Nanodrop and 247 µg/ml by Bradford method using BSA as the standard;	GeneID (NCBI): 57489	Recommended Dilutions: WB 1:500-1:3000
Source: Rabbit	Full Name: outer dense fiber of sperm tails 2-Like	
Isotype: IgG	Calculated MW: 513 aa, 60 kDa	
Immunogen Catalog Number: AG20897	Observed MW: 60-74 kDa	

Applications

Tested Applications: WB, ELISA	Positive Controls: WB : HEK-293 cells, mouse kidney tissue, rat kidney tissue
Cited Applications: IF, WB	
Species Specificity: human, mouse, rat	
Cited Species: human	

Background Information

ODF2L, also named as KIAA1229, has many isoforms with MW 60-80 kDa. The function of ODF2L (Outer dense fiber protein 2-like) remains largely unknown.

Notable Publications

Author	Pubmed ID	Journal	Application
Jie Li	36378528	J Clin Invest	WB
Paul de Saram	28775150	J Cell Sci	WB,IF

Storage

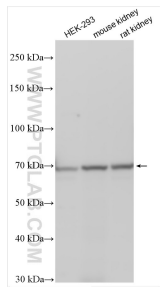
Storage:
Store at -20°C. Stable for one year after shipment.
Storage Buffer:
PBS with 0.02% sodium azide and 50% glycerol pH 7.3.
Aliquoting is unnecessary for -20°C storage

*** 20ul sizes contain 0.1% BSA

For technical support and original validation data for this product please contact:
T: 1 (888) 4PTGLAB (1-888-478-4522) (toll free in USA), or 1(312) 455-8498 (outside USA)
E: proteintech@ptglab.com
W: ptglab.com

This product is exclusively available under Proteintech Group brand and is not available to purchase from any other manufacturer.

Selected Validation Data



Various lysates were subjected to SDS PAGE followed by western blot with 23887-1-AP (ODF2L antibody) at dilution of 1:1500 incubated at room temperature for 1.5 hours.